



Rafm Company, Inc.

1986 CATALOGUE

Dear Customer;

We wish to take a moment here to explain **RAFM** Company, Inc. to you. The company exists to provide you, the gamer and collector with top quality figures, games and publications. We are veteran gamers ourselves, with interests covering all aspects of the adventure gaming hobby. Our background and main interest is in historical miniatures and to gamers in this branch of the hobby we promise to make every effort to support your activities.

Whether you live in Canada, the United States, Australia, Great Britain, or Malaysia, we have something for you. Contained between these covers you will find product listings available in your country.

RAFM Company, Inc. currently manufactures, in Canada, under licensing agreements, the miniatures of the "Ral Partha", and "Citadel" companies. New figures and ranges are constantly being added.

RAFM publishes and imports a growing range of books and magazines intended especially for the gamer and collector.

RAFM will continue to support your gaming interests with quality figures, with competitive prices and with the better idea. Be part of the **Rafm** tradition for 1986 - **Rafm** can help make your adventure the best.

For customers to whom we cannot sell certain lines due to licensing agreements, we suggest contacting the following firms regarding their products.

RAL PARTHA ENTERPRISES, INC.

5938 Carthage Court
CINCINNATI, Ohio
45212 1-513-631-7335

CITADEL MINIATURES LTD.

Chewton Street, Hilltop,
Eastwood, Nottingham
NG16 3HY
England

All Prices Subject to Change Without Notice.

Figures pictured in this catalogue are not necessarily shown actual size.

In 25 mm lines, except where otherwise stated, all packages of infantry contain six figures, and all packages of cavalry contain three riders and three horses.

A number of the figures available may require some assembly.

Your local **Rafm** dealer/distributor:





Rafm Company, Inc.

19 Concession St.
Cambridge, Ontario
N1R 2G6 1-519-623-4832



1986 CATALOGUE



TABLE OF CONTENTS

Rafm "Shadows & Steel"	2	Rafm "Jack Tar"	43
Rafm "Legions of Darkness"	2	Rafm "All the King's Men"	43
Rafm "The Cursed Ones"	3	Rafm "Siege Equipment"	44
Rafm "The Monster Mash"	3	Rafm "Blue and Grey"	46
Rafm "Reptiliads"	4	Miniature Wargames Magazine	46
Rafm "Custom Characters"	6	Wargames Research Group Publications	47
Rafm "The Outcasts"	8	Rafm Publications	48
Rafm "Science Fiction Vehicles"	8	Make a Miniatures Gaming Table <i>by John Laing</i>	50
Rafm "Knights in Plate"	9	The Absolute Beginner's Guide to Painting Miniatures <i>by Tony Ackland</i>	52
Rafm "Armies of the Hellenistic Period"	10	The Advanced Guide to Painting Your Miniatures <i>by Peter Armstrong</i>	53
Rafm "Flint and Feather"	12	Basic Figure Conversions <i>by Tony Ackland</i>	55
Rafm "Armies of the Caesars"	14	Empires, Eagles & Lions	Inside Back Cover
Rafm Iron-On Hexes	14		

IN CANADA ONLY

Ral Partha "1200 A.D."	15	Citadel "Goblin Mutants"	31
Ral Partha "Colonials"	16	Citadel "Regiments of Renown"	31
Ral Partha "The Hoplites"	17	Citadel "The Amazons"	32
Ral Partha "Condottiere"	18	Citadel "Magic Users"	32
Ral Partha "The Samurai"	18	Citadel "Mounted Adventurers"	32
Ral Partha "The Royal Armies of the Hyborean Age"	19	Citadel "Warriors of Chaos"	33
Ral Partha "Personalities"	20	Citadel "Knights of Chaos"	33
Ral Partha "Fantasy Collector Series"	24	Citadel "Brian Ansell Miniatures"	34
Ral Partha "Dungeon Accessories"	25	Citadel "Armoured Orcs"	34
Ral Partha "Children of the Night"	26	Citadel "Fantasy Tribes"	35
Ral Partha "Twentieth Century Plus"	27	Citadel "Wierd Fantasy"	37
Ral Partha "The Adventurers"	28	Citadel "Fiend Factory Figures"	38
Ral Partha "The Best of Ral Partha"	28	Citadel "Fantasy Adventurers"	39
Ral Partha "Adventure Packs"	29	Citadel "Scoundrels, Rogues and Thieves"	40
Ral Partha "Elfquest"	29	Citadel "Traveller and Striker Sets"	40
Citadel "High Elves"	30	Citadel "War of the Roses"	41
Citadel "The Slann"	30	Citadel "Dark Ages"	41
Citadel "Dark Elves"	30	Citadel "Medievals"	42
Citadel "Giants"	31	Citadel "Samurai Warriors"	42



Rafm Miniatures -25 mm

SHADOWS & STEEL

The legend of Tandaloor comes to life for you with these characters. You will feel the excitement of the search or the exhilaration of Tandaloor's power.

Each kit contains a complete miniatures adventure party consisting of:

- Parts for figures pictured
- A game master's sheet with character descriptions, maps and a scenario
- A player's guide that includes painting instructions, character stats and a general description of that set.
- A two-sided floor plan

Any kit may be combined with one or more of the other kits for a complete adventure game scenario.

2001 Wizard's Adventure Party	\$9.00
2002 Conquistador Dwarves	\$9.00
2003 The Iron Brotherhood	\$9.00
2004 Vampyres of Tandaloor	\$9.00

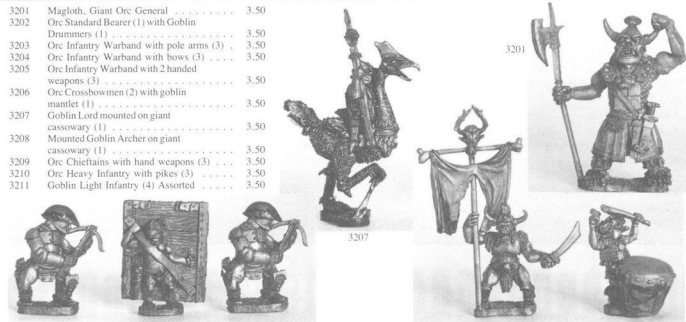


Rafm Miniatures -25 mm

LEGIONS OF DARKNESS

The Legions of Darkness are ready to do their worst. The wild fire wrath of destruction will spread across our world and their world. There will be no haven left untouched.

3201	Magloth, Giant Orc General	3.50
3202	Orc Standard Bearer (1) with Goblin Drummers (1)	3.50
3203	Orc Infantry Warband with pole arms (3)	3.50
3204	Orc Infantry Warband with bows (3)	3.50
3205	Orc Infantry Warband with 2 handed weapons (3)	3.50
3206	Orc Crossbowmen (2) with goblin mantlet (1)	3.50
3207	Goblin Lord mounted on giant cassowary (1)	3.50
3208	Mounted Goblin Archer on giant cassowary (1)	3.50
3209	Orc Chieftains with hand weapons (3)	3.50
3210	Orc Heavy Infantry with pikes (3)	3.50
3211	Goblin Light Infantry (4) Assorted	3.50



Rafm Miniatures -25 mm

THE CURSED ONES

The brutality of man is presented in "The Cursed Ones". These titans of evil will test the steel of any adventurer to his very quick.

Designed by James Johnson

Each package contains the story of "The Cursed Ones" and the stats necessary to use your figure in your game. Painting and some assembly is all that is required.

3601	Spider Lord	7.00
3602	Witch-Worm	3.50
3603	Queen Bee (Wasp Woman)	3.50
3604	Ape Man and the Missing Link	3.50
3605	Werelings	3.50
3606	Amphiberon	3.50
3607	Dragonmen	3.50
3608	Fishface and The Claw	3.50
3609	The Eagle Warrior and Beetlebaum	3.50
3610	Forwardt and the Antearer	3.50



Rafm Miniatures -25 mm

THE MONSTER MASH

These are specialty uglies that you must have to liven up your adventure. We've left no stone unturned.

Designed by Carol Moyer

Each package contains the stats necessary to use your monster in your game. Painting is all that is required.

3401	Mother Dragon with heating eggs	5.00
3402	Armoured Centipede	3.00
3403	Cobra Queen (1)	2.00
3404	Crystal Creature (3)	3.00
3405	Gibbering Howlers (4)	2.00
3406	Flowering Death Spitters (4)	2.00
3407	Pit Dwellers (4)	2.00
3408	Fungus Men (2)	3.00
3409	Swamp Thing (1)	2.00
3410	Giant Clam (1)	3.00
3411	Schizoid Man and Were Moth	3.00
3412	Desert Stalker (1)	2.00
3413	Twisted Sister and Little Uglies	3.00



3402



3404



3409



3410

REPTILIADS

Introducing the Reptiliads, a nation of lizard men, wandering the world in search of experience and riches to take back to their impoverished homeland to save it from domination by the orcs. Fiercely proud and independent, this ancient race has dwindled in recent years until rediscovered by the scholar Ossian.

His book is now available describing this remarkable tribe. Our designer has prepared miniatures of their warriors and these may be added to your campaign.

Designed by Bob Murch

RE-1	Reptiliad General (Hatha)	1.25
RE-2	Reptiliad Standard Bearer and Musician with Gong	2.50
RE-3	Reptiliad Shaman (Priest)	1.25
RE-4	Reptiliad Unit Commander with Halberd	1.25
RE-5	Reptiliad with Bident (Battle Fork)	1.25
RE-6	Reptiliad with Halberd	1.25
RE-7	Reptiliad Front Rank Pikeman	1.00
RE-8	Reptiliad Middle Rank Pikeman	1.00
RE-9	Reptiliad Rear Rank Pikeman	1.00
RE-10	War Turtle	14.00
RE-11	Rogue War Turtle	10.00
RE-12	Gilla-worm Heavy Cavalry/Mtd Officer on War Newt (1)	2.50
RE-13	Gilla-worm Light Cavalry with Bow on War Newt (1)	2.50
RE-14	Gilla-worm Horn Blower and Standard Bearer (1)	2.00
RE-15	Gilla-worm Heavy Infantry with Halberd (1)	1.00
RE-16	Gilla-worm Foot Officer with Scimitar (1)	1.00
RE-17	Gilla-worm with Bow (1)	1.00
RE-18	Gilla-worm with Javelin or Light Spear (1)	1.00
RE-19	Reptiliad Assault Engineer	1.25
RE-20	Reptiliad Siege Crew	1.25
RE-21	Reptiliad Scout	2.50
RE-22	Reptiliad Adventurer	2.50
RE-23	Reptiliad Duelists	2.50
RE-100	Reptiliad Command Set (Unit Commander, Shaman, Musician, Standard Bearer)	4.50
RE-101	Reptiliad Flank Unit (with Halberd and Bident)	2.00
RE-102	Reptiliad Pike File (Front, Middle and Rear Flank)	2.50
RE-103	Gilla-worm Command Group (3) Officer, Standard, Musician	2.25
RE-104	Gilla-worm Heavy Infantry with Halberd (3)	2.25
RE-105	Gilla-worm Missile Infantry (2) with Bow and Javelin	1.50
RE-106	Gilla-worm Cavalry (2) on War Newt with Bow and Halberd	3.50
0008	Reptiliad History Book	3.95



RE-10



RE-21



RE-1



RE-2



RE-19



RE-22





RE-3



RE-4



RE-5



RE-104



RE-16



RE-17

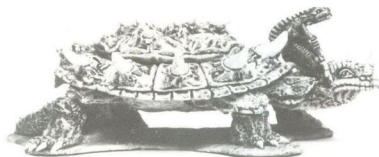


RE-8

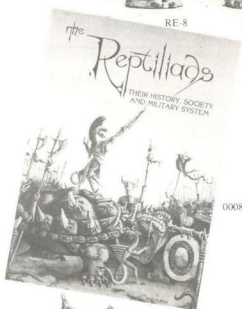
RE-9



RE-106



RE-11



0008



RE-103

Rafm Miniatures -25 mm

CUSTOM CHARACTERS

A new idea for your own personal character. It is a kit; you assemble it to your specifications; two figures per package.

Your only limitation is your imagination!

Designed by Bob Murch

CC- 1	Heroic Adventurer	2.50
CC- 2	Warrior Knight	2.50
CC- 3	Female Fighter	2.50
CC- 4	Evil Warlord	2.50
CC- 5	Barbarian Warrior	2.50
CC- 6	Thief	2.50
CC- 7	Wizard	2.50
CC- 8	Sorceress	2.50
CC- 9	Priest	2.50
CC-10	Elvish Adventurer	2.50
CC-11	Dwarf	2.50
CC-12	Half Orc	2.50
CC-13	Ranger	2.50
CC-14	Monk	2.50
CC-15	Paladin in Plate Armour	2.50
CC-16	Female Thief	2.50
CC-17	Armoured Female Fighter	2.50
CC-18	Crusader in Chainmail	2.50
CC-19	Assassin Ninja	2.50
CC-20	Evil Sorcerer	2.50
CC-21	Gladiator	2.50
CC-22	Wood Elf	2.50
CC-23	Goblinoid Champion	2.50
CC-24	Barbarian in Leather & Fur	2.50

Each pack contains pieces for two complete figures.



CC-18



CC-15



CC-4



CC-9



CC-3

ALL PARTS FROM
EACH PACK ARE
INTERCHANGEABLE!

Rafm Miniatures -25 mm

THE OUTCASTS

The warriors of the desert tracks. Lord Gort leads his ruthless horde on raids of plunder and destruction on peaceful trade caravans and desert travellers.

Designed by Bob Murch

OC-1	Lord Gort	1.00
OC-2	The Vicar	1.00
OC-3	Scary Mary	1.00
OC-4	Yob the Faceless One	1.00
OC-5	Digger the Thief	1.00
OC-6	Pinhead the Assassin	1.00
OC-7	Scags	1.00
OC-8	Pinky the Eunuch	1.00
OC-9	Majuba Sunshine	1.00
OC-10	Pongo Gutbag on Litter of Doom	6.00
OC-11	Outcast's Blade Chariot	7.00



OC-1



OC-2



OC-3

- Satisfy any adventure your imagination can conceive
(*Aftermath, Dungeon Quest, Warriors of the Road*)



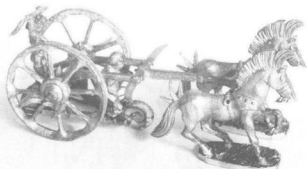
OC-4



OC-5



OC-6



OC-11



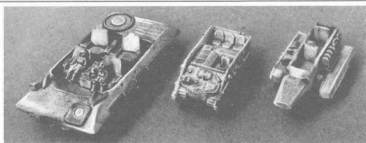
OC-10

Rafm Miniatures -15 mm

SCIENCE FICTION VEHICLES

These vehicles will be an excellent addition to any science fiction buff's arsenal.
(Formerly manufactured by Martian Metals.)

SV-1	Air Raft	7.00
SV-2	Land Crawler	5.00
SV-3	Light Utility Tractor	5.00
SV-4	Heavy Air Raft	12.00
SV-5	Light Grav Tank	14.00
SV-6	Grav Carrier APC	14.00
SV-7	Grav Support Ship	14.00
SV-8	Small Grav Vehicles	4.00
SV-9	Rocket Launchers	3.00



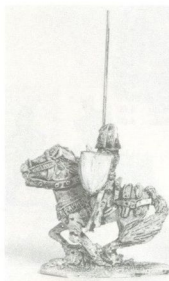
SV-1

SV-3

SV-2

KNIGHTS IN PLATE

Create armies for the late medieval period. The change from lance to the musket — re-enact the plate vs. musket.



1415



1453



1407



1432



1434



1438



1428 Part



1408



Redesigned by Carol Moyer

1400	Billman advancing (6)	\$ 4.00
1401	Crossbowman advancing (6)	4.00
1402	Peasant bowman firing (6)	4.00
1403	Peasant advancing, ass't weapons (6)	4.00
1404	Peasant with pole sling	4.00
1406	Man-at-Arms with bassinet, plate armour & halberd (6)	4.00
1407	Spearman advancing (6)	4.00
1408	Longbowman with sword & buckler (6)	4.00
1410	Flemish Infantry with Gutendag Hammer (6)	4.00
1411	Pikemen with Chapel de fer in Brigandine (6)	4.00
1412	Mounted knight, lance, barded horse (3)	4.50
1413	Mounted knight, lance (3)	4.50
1414	Mounted knight, lance, caparisoned horse (3)	4.50
1415	Mounted man-at-arms with light lance (3)	4.50
1416	Crossbowman in cloth cap (2)	4.00
1417	Gunner with hand cannon (6)	4.00
1418	Crossbowman with shield & barbute (6)	4.00
1419	Handgunner in barbute & brigandine (6)	4.00
1425	English billman, felt hat, advancing (6)	4.00
1426	English bowman, felt hat, firing (6)	4.00
1427	Man-at-Arms, salade, attacking with ass't pole weapons (6)	4.00
1428	Foot command group, 4 figures (2 officers, 2 standards) (4)	3.00
1430	Halbardier in full plate armour (6)	4.00
1431	Man-at-Arms, with partizan (6)	4.00
1432	Spearman, potherm, advancing (6)	4.00
1434	Scottish pikeman, coat of plates (6)	4.00
1438	Hand gunner (6)	4.00
1439	Swiss pikeman advancing (6)	4.00
1440	Archer in Salade (6)	4.00
1449	Mounted knight, lance (3)	4.50
1450	Mounted knight, with heavy lance, caparisoned horse (3)	4.50
1451	Mounted knight, with heavy lance, barded horse (3)	4.50
1452	Mounted Fr. knight, with heavy lance, caparisoned horse (3)	4.50
1453	Mounted Fr. knight, with heavy lance, barded horse (3)	4.50
1454	Mounted Gendarme, with heavy lance on barded horse (3)	4.50
1455	Mounted command group, officer, herald, standard bearer (3)	4.50
1460	24 assorted peasant weapons	2.50
1461	24 assorted pole weapons	2.50
1462	24 pikes with heads	2.50
1463	24 halberds assorted	2.50
1464	24 partizans assorted	2.50
1465	24 Billbooks	2.50
1470	Scottish Highlander Bowman (6)	4.00
1471	Scottish Highlander with two handed broadsword (6)	4.00
1472	Scottish Highlander Bowman (6)	4.00
1483	Jan Ziska (1)	1.25
1484	Medieval Foot Officer (6)	2.50
1486	Hussite Pikeman (6)	4.00

ARMIES OF THE HELLENISTIC PERIOD

The armies of the Greek Age, following the death of Alexander The Great. The generals who divided his Empire up among themselves, fought each other and their neighbours until the Romans defeated them. These figures have separate heads, shields and weapons. We are releasing a selection of these parts to provide maximum variety.

Designed by Bob Murch

AH-1	Imitation Legionary with Thracian Helmet with scutum, pilum (6)	4.00
AH-2	Pikeman in Chainmail with aspis (6)	4.00
AH-3	Front Rank Pikeman with aspis and Thracian helmet (6)	4.00
AH-4	Hypaspist with Macedonian helmet and large shield (6)	4.00
AH-5	Pikeman in quilted armour with aspis (6)	4.00
AH-6	Pikeman in Asian dress with pilas helmet and aspis (6)	4.00
AH-7	Kyrtii Slinger with light shield (6)	4.00
AH-8	Elite Guard Infantry, spear, large shield (6)	4.00
AH-9	Illyrian infantry with thureos (6)	4.00
AH-10	Elymaian archer (6)	4.00
AH-11	Thracian Thureophoros (6)	4.00
AH-12	Thracian peltast (6)	4.00
AH-13	Thorakites (6)	4.00
AH-14	Light equipped Javelinman (6)	4.00
AH-15	Extra Heavy companion cavalry (3)	4.00
AH-16	Agema cavalry (3)	4.00
AH-17	Light Cavalry (3)	4.00
AH-18	Illyrian Light Cavalry (3)	4.00
AH-19	Armoured War Elephant with Howdah, 2 crew and Mahout	9.00
AH-20	Indian Elephant with Mahout	6.00
AH-21	Command Group I officers, mtd (1) and dismounted (2)	4.00
AH-22	Command Group II - Foot Standards and Musicians (2ea)	4.00
Successors		
AH-23	Argyraspides Hypapist (6)	4.00
AH-24	Staff Slinger (6)	4.00
AH-25	Greek Cavalry with shield (3)	4.00
AH-26	Gallatian Heavy Cavalry (3)	4.00
AH-27	Gallatian Warrior (6)	4.00
AH-28	Bosphoran Javelinman (6)	4.00
AH-29	Scythed 2-Horse Chariot (1)	4.00
AH-30	Macedonian Prodromos with Kontos (3)	4.00
AH-31	Neo-Cretan Archer (6)	4.00
AH-32	Greek Kneeling Archer (6)	4.00
AH-33	Mysian Peltast (6)	4.00
AH-34	Seleucid Cataphract (3)	4.00
AH-35	Greek Mercenary Hoplite (6)	4.00
AH-36	Greek Mercenary Peltast (6)	4.00

Maccabean Jewish

AH-51	Maccabean Thureophoros (6)	4.00
AH-52	Maccabean Slinger (6)	4.00
AH-53	Jewish Archer (6)	4.00
AH-54	Jewish Javelinman (6)	4.00
AH-55	Maccabean Light Cavalry (3)	4.00

Indo-Bactrians

AH-61	Indian Command Elephant with Noble Crew	8.00
AH-62	Bactrian Greek Cavalry (3)	4.00
AH-63	Bactrian Phalangite (6)	4.00
AH-64	Indian Javelinman (6)	4.00
AH-65	Indian Longbowman (6)	4.00
AH-66	Indian Armoured Infantry with Longbow (6)	4.00
AH-67	Indian Light Cavalry (3)	4.00
AH-68	Saka Armoured Cavalry (3)	4.00
AH-69	Indian Forest Guardswoman (6)	4.00
AH-70	Indian Palace Tribesman (6)	4.00

Scythians

AH-81	Scythian Command Group	4.00
AH-82	Scythian Horse Archer (3)	4.00
AH-83	Scythian Noble Heavy Cavalry (3)	4.00
AH-84	Scythian Mounted Warrior with Axe (3)	4.00
AH-85	Scythian Foot Warrior (6)	4.00
AH-86	Scythian Foot Axeman (6)	4.00
AH-87	Maiotian Infantryman (6)	4.00
AH-88	Scythian Noblewoman Archer on Foot (6)	4.00
AH-89	Scythian Foot Archer (6)	4.00
AH-100	Hellenistic Heads (36) (6 types)	3.00
AH-101	Auxiliary Heads (36) (6 types)	3.00
AH-102	Weapons (24) (4 types) Kopis, Shortsword, Rhomphaia, Pilum	3.00
AH-103	Missile Weapons (24) (4 types) Javelin, Sling, Stave bow, Composite bow	3.00
AH-104	Heavy Shields (24) (4 types) Aspis, Scutum, Lg. Hoplite, Thureos	3.00
AH-105	Light Shields (24) (4 types) Thureos, Small Round, Wicker, Crescent	3.00

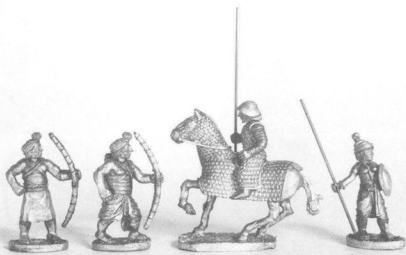


AH-88



AH-34

AH-26



AH-65

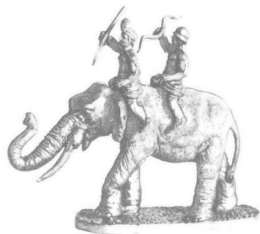
AH-66

AH-68

AH-69



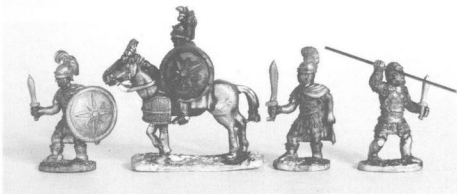
AH-19



AH-20

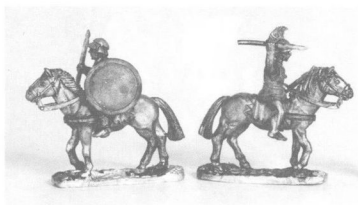


AH-61



AH-21

AH-85



AH-16

AH-18



AH-29



AH-3

AH-9



AH-13

FLINT AND FEATHER

This range of figures represents the first nations of the Great Lakes Indians, and the white settlers. Fierce warriors lurking in the forests to attack the white intruders. A definite plus for colonial gaming.

Designed by Bob Murch

IN-1	Great Lakes Indian Chief & Shaman	2.00
IN-2	Huron Warrior in armour, assorted weapons (6)	4.00
IN-3	Ottawa Warrior with bow (6)	4.00
IN-4	Huron Hunter with bow, kneeling (6)	4.00
IN-5	Iroquois Warrior with shield, assorted weapons (6)	4.00
IN-6	Iroquois Warrior with musket (6)	4.00
IN-7	Mission/Coureur de bois Indian with musket (6)	4.00
IN-8	Mississauga Warrior, assorted weapons (6)	4.00
IN-9	Neutral Tribe Warrior, assorted weapons (6)	4.00
IN-10	Chief Joseph Brant (1780) Mtd. (1)	2.00
IN-11	Chief Tecumseh (1812) (1)	1.25
IN-12	Canoe with two paddlers	4.00
IN-13	Large trade canoe & trade goods with four paddlers	6.00
IN-14	Canoe with 2 white men paddlers & trade goods	4.00
IN-15	Miami Indian warrior with musket (6)	4.00
IN-16	Potawatomi Indian warrior with musket (6)	4.00
IN-17	French Canadian militiaman with musket (6)	4.00
IN-18	Coureur de bois with musket (6)	4.00
IN-19	Settler with musket (6)	4.00
IN-20	Rogers Ranger with musket (6)	4.00
IN-21	Goreham's Ranger with musket (6)	4.00
IN-22	Chief Pontiac	1.25
IN-23	Missionary Priest	1.25
IN-24	Daniel Boone	1.25
IN-25	Major Robert Rogers	1.25
IN-26	Accessories - Fr. Muskets (6), Trade Muskets (6) Indian Weapons (6), Trade Goods (2)	3.00

* IN-27	British Light Infantry Advancing 1759 (6)	4.00
* IN-28	British Infantry in North American Kit, Firing 1759 (6)	4.00
* IN-29	British Infantry, Braddock Campaign 1755 (6)	4.00
* IN-30	British North American Command Group 1759 (6)	4.00
* IN-31	American Infantry in Hunting Shirts 1759 (6)	4.00
* IN-32	American Infantry in Regimentals 1759 (6)	4.00
* IN-33	French Infantry in Waistcoat 1759 (6)	4.00
* IN-34	Compagnie Franche De La Marine 1759 (6)	4.00
* IN-35	French North American Command Group 1759 (6)	4.00
* IN-36	Female Settlers Firing (2) Loading (2) Unarmed (2)	4.00



IN-32



IN-33



IN-34



IN-5



IN-30



IN-35



IN-1



IN-2



IN-3



IN-4



IN-27



IN-28



IN-29



IN-31

*Packs IN-27 to IN-36 include a painting guide and organization notes.



IN-14



IN-17

IN-18

IN-19

IN-21



IN-20

IN-23



IN-24

IN-25



IN-12



Rafm Miniatures -25 mm

ARMIES OF THE CAESARS

Imperial Rome revisited in all its military splendor and glory. The majesty that was Rome is here — build the legions of Hadrian — expand the empire.

designed by Bob Murch

RA-1	Augustan Legionary in chainmail (6) \$ 4.00
RA-2	Early Imperial Legionary in chainmail & pteruges (6) 4.00
RA-3	Legionary in segmented armour advancing with pilum (6) 4.00
RA-4	Legionary in segmented armour with marching kit (6) 4.00
RA-5	Extra heavy Legionary with sword (6) 4.00
RA-6	Early Roman Auxiliary in leather armour (6) 4.00
RA-7	Roman Auxiliary in chainmail (6) 4.00
RA-8	Germanic Auxiliary (6) 4.00
RA-9	Eastern Roman Auxiliary Archer (6) 4.00
RA-10	Roman Auxiliary Slinger (6) 4.00
RA-11	Barbarian Symachiarti with club (6) 4.00
RA-12	Roman Marine (6) 4.00
RA-13	Roman Gladiators (3 types) (6) 4.00
RA-14	Praetorian Guard (6) 4.00
RA-15	Early Roman Heavy Cavalry in chainmail (3) 4.00
RA-16	Roman Auxiliary Cavalry in scalemail (3) 4.00
RA-17	Moorish Light Cavalry (3) 4.00
RA-18	Roman Command Pack I - Centurions (2), signifer, cornicum 4.00
RA-19	Roman Command Pack II - Mtd. General, Foot Officer, Mtd. Standard 4.00



RA-2 RA-3 RA-5 RA-6



RA-13 RA-14



RA-16 RA-17



RA-9



RA-10 RA-11 RA-12

Rafm Accessories

IRON-ON HEX TRANSFERS

The iron-on transfers are for application of a hex pattern on cloth, wood or paper using an ordinary household iron. They are available in black or white.

AS-1	1" Hex - 4' x 4' Area \$2.75
AS-2	2" Hex - 6' x 4' Area \$3.25
AS-3	3" Hex - 8' x 4' Area \$3.75



RAL PARTHA -25 mm

1200 A.D.

Knights and peasants from the Middle Ages. Build the armies of the great feudal age from remote Scotland to fabulous Constantinople.

Cavalry Packs: 3 Horses, 3 Riders.
Infantry Packs: 6 Figures.



1145



1116



1101

1111



1180

1080	Norman Command Set	4.00	1165	Catalian Archer	4.00
1081	Frankish Command Set	4.00	1166	Spanish Cavalry, with lance	4.00
1082	Norman Heavy Infantry with Spear	4.00	1167	Spanish Cavalry, striking with sword	4.00
1083	Italian Heavy Infantry with Spear	4.00	1168	Spanish Cavalry, with sword	4.00
1084	Norman Light Archer	4.00	1171	Moorish Archer	4.00
1085	Heavy Crossbowman	4.00	1172	Moor, with spear and shield, advancing	4.00
1086	Maronite Isyrian Archer	4.00	1173	Moorish Archer, kneeling, firing	4.00
1090	Early Norman Knight with Mace on Horse	4.00	1175	Moorish Cavalry, with scimitar	4.00
1091	Anglo-Norman Knight with Lance on Horse	4.00	1176	Moorish Cavalry, with spear	4.00
1092	Mounted Sergeant with Lance on Horse	4.00	1177	Moorish Horse Archer	4.00
1093	Knight Templar, on Horse	4.00	1180	Byzantine Command Pack	4.00
1094	Knight of St. John, on Horse	4.00	1181	Byzantine (Scutari) Infantry, Spear (6)	4.00
1095	Breton Light Cavalry	4.00	1182	Varangian Guard, Axe, Battle Dress (6)	4.00
1096	Norman Heavy Cavalry Knight in Hauberk, on Horse	4.00	1183	Byzantine Infantry, with spear (6)	4.00
1097	Turcopole with Lance on Horse	4.00	1184	Psloi Light Infantry, with Bow (6)	4.00
1101	Viking, swinging axe	4.00	1185	Rus Mercenary Heavy Infantry, Axe (6)	4.00
1102	Viking, swinging 2 handed Axe	4.00	1186	Byzantine Heavy Cavalry Archer (3)	4.00
1103	Viking, throwing spear	4.00	1187	Byzantine Light Cavalry (3)	4.00
1106	Viking Archer	4.00	1188	Byzantine Heavy Cavalry, with Spear (3)	4.00
1107	Viking, swinging sword	4.00	1189	Klibanophorus Extra Heavy Cavalry on Extra Armoured Horse (3)	4.00
1108	Viking, striking with axe	4.00	1200	Mongol Archer	4.00
1111	Viking, striking with two-handed sword	4.00	1201	Mongol Medium Cavalry, with spear	4.00
1114	Saxon Command Set	4.00	1202	Mongol Medium Cavalry, with spear	4.00
1115	Norman Knight, on charging horse	4.00	1203	Mongol Medium Cavalry, with sword	4.00
1116	Saxon Huscarle Cavalry (3)	4.00	1204	Mongol Medium Cavalry, with mace	4.00
1117	Saxon Huscarle Infantry (6)	4.00	1205	Mongol Heavy Cavalry, with spear	4.00
1118	Saxon Fyrdmen (6)	4.00	1206	Mongol Horse Archer	4.00
1119	Armed Peasant Levy (6)	4.00	1209	Mongol Auxiliary Archer	4.00
1121	English Longbowman	4.00	1210	Mongol Auxiliary Infantry, with spear	4.00
1122	English Foot Knight	4.00	1211	Sung Chinese Heavy Cavalry, with spear	4.00
1123	English Pikeman	4.00	1213	Sung Chinese Light Cavalry, with spear	4.00
1125	English Knight, with lance, on galloping horse	4.00	1214	Sung Chinese Light Cavalry, with spear	4.00
1128	English Man-at-Arms, with sword	4.00	1215	Sung Chinese Heavy Infantry, with spear	4.00
1129	English Man-at-Arms, with axe	4.00	1216	Sung Chinese Heavy Infantry, with sword	4.00
1131	Highlander with Axe	4.00	1217	Sung Chinese Light Infantry, with spear	4.00
1132	Galloglas	4.00	1218	Sung Chinese Crossbowman	4.00
1133	Scottish Schiltron Spearman	4.00	42-125	English Knight with sword, on galloping horse	4.00
1134	Scottish Archer	4.00	42-153	French Man-at-Arms, with spear	4.00
1135	Scottish Knight	4.00	42-154	French Crossbowman	4.00
1142	German Foot Knight, swinging mace	4.00	42-155	French Knight, with lance, on galloping horse	4.00
1143	Teutonic Knight Infantry (6)	4.00	42-181	Byzantine Infantry with spear	4.00
1144	Teutonic Knight Cavalry (3)	4.00			
1151	French Foot Knight	4.00			
1152	French Man-at-Arms, with sword	4.00			
1153	French Man-at-Arms, with spear	4.00			
1154	French Crossbowman	4.00			
1155	French Knight, with lance, on galloping horse	4.00			
1156	Crossbowman, on horseback	4.00			
1157	French Infantry with spear	4.00			
1160	Spanish Armoured Infantry, with sword	4.00			
1161	Spanish Armoured Infantry, with hand and half sword	4.00			



1118

1143



1155

1157

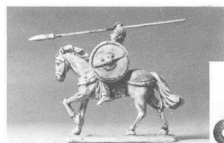
THE HOPLITES

Back to the days before Christianity. These are the soldiers of the armies of classic times.

Cavalry Packs: 3 Horses, 3 Riders.
Infantry Packs: 6 Figures.

GREECE

AN-10	Command Group	4.00
AN-100	Elite Hoplite, thrusting with spear	4.00
AN-101	Elite Hoplite, with spear, in reserve	4.00
AN-110	Lacedaemonian Hoplite (Spartan), in reserve	4.00
AN-111	Lacedaemonian Hoplite, draped shield, in reserve	4.00
AN-120	Theban Hoplite, naked 4th rank	4.00
AN-130	Illyrian Hoplite, 3rd rank	4.00
AN-140	Corinthian Hoplite, spear across chest	4.00
AN-150	Attic Hoplite, marching order	4.00
AN-151	Attic Hoplite, thrusting with spear	4.00
AN-160	Cretan Archer	4.00
AN-170	Pelast, throwing Javelin	4.00
AN-171	Thracian Peltast, advancing	4.00
AN-180	Heavy Cavalry, scale cuirass	4.00
AN-190	Medium Cavalry	4.00



AN-508



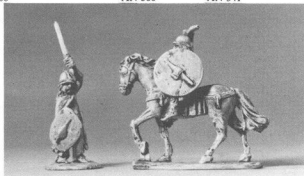
AN-480



AN-100

AN-300

AN-341



AN-501

AN-550

PERSIA

AN-20	Persian Command Group	4.00
AN-200	Immortal Spearman, in line, attacking	4.00
AN-201	Royal Guard, with spear	4.00
AN-202	Immortal Archer	4.00
AN-205	Persian Swordsman, swinging sword	4.00
AN-210	Elite Phrygian Axeman, attacking	4.00
AN-215	Median Spearman, attacking	4.00
AN-220	Anatolian Swordsman, with pointed hat, swinging sword	4.00
AN-250	Heavy Persian Cavalry	4.00
AN-270	Light Persian Cavalry	4.00
AN-275	Sythian Horse Archer, firing bow	4.00

REPUBLICAN ROME

AN-030	Command Group	4.00
AN-300	Triaria, with Pilum	4.00
AN-301	Triaria, slashing with short sword	4.00
AN-305	Hastati/Principes, throwing pilum	4.00
AN-306	Hastati/Principes, thrusting	4.00
AN-307	Hastati/Principes, advancing	4.00
AN-310	Velites, throwing javelin	4.00
AN-320	Italian Ally, thrusting spear	4.00
AN-340	Auxiliary Slinger	4.00
AN-341	Asian Archer, firing	4.00
AN-350	Roman Cavalry	4.00
AN-360	Allied Light Cavalry	4.00
AN-361	Auxiliary Light Cavalry with Javelin (3)	4.00

CARTHAGE

AN-040	Command Group	4.00
AN-400	Citizen Spearman, advancing	4.00
AN-401	Citizen Spearman, attacking	4.00
AN-410	African Ally, advancing with spear	4.00
AN-420	Spanish Infantry, throwing javelin	4.00
AN-421	Spanish Spearman, attacking	4.00
AN-430	Lybian Spearman, advancing	4.00
AN-431	Lybian, throwing javelin	4.00
AN-440	Baleric Slinger	4.00
AN-450	Citizen Cavalry, thrusting spear	4.00
AN-451	Citizen Cavalry, holding spear	4.00
AN-460	Spanish Cavalry	4.00
AN-470	Numidian Cavalry	4.00
AN-480	War Elephant	7.00

GAUL

AN-50	Gallic Command Group I	4.00
AN-51	Gallic Command Group II	4.00
AN-500	Spearman, thrusting	4.00
AN-501	Swordsman, striking overhead	4.00
AN-502	Swordsman, advancing	4.00
AN-503	Skirmisher, throwing javelin	4.00
AN-504	Swordsman, striking overhead	4.00
AN-505	Archer	4.00
AN-506	Gaul, Naked (Gasati) with Javelin	4.00
AN-507	Gaul, Chainmail with Broadsword	4.00
AN-508	Gaul, Mounted with Spear	4.00
AN-550	Cavalry, charging	4.00

MACEDONIA

AN-060	Command Group	4.00
AN-600	Phalangite, 1st rank, pike leveled	4.00
AN-601	Phalangite, 2nd rank, pike raised	4.00
AN-602	Phalangite, 3rd rank, pike at ready	4.00
AN-610	Hypaspist	4.00
AN-620	Staff Slinger	4.00
AN-650	Companion Cavalry	4.00

RAL PARTHA -25 mm

CONDOTTIERE

The soldiers of the renaissance and religious struggles.

Cavalry Packs: 3 Horses, 3 Riders. Infantry Packs: 6 Figures.

SWISS	
1490	Swiss Command (5) 4.00
1491	Swiss Pikeman 4.00
1492	Swiss Pikeman 4.00
1493	Swiss Pikeman 4.00
1494	Swiss Halberdier 4.00
1495	Swiss Halberdier 4.00
1496	Swiss Crossbow 4.00
1497	Swiss Crossbow 4.00
1498	Swiss Arquebuser 4.00
1499	Swiss Mounted Arquebuser 4.00

LANDSKNECHTS	
1500	Officers 4.00
1501	Standards and Musicians 4.00
1502	Arquebuser, firing 4.00
1503	Arquebuser, firing 4.00
1504	Arquebuser, firing 4.00
1505	Arquebuser, loading 4.00
1506	Arquebuser, loading 4.00
1507	Arquebuser, loading 4.00
1508	Pikeman, armoured, leveled pike 4.00
1509	Pikeman, half-armoured, leveled pike 4.00
1510	Pikeman, unarmoured, leveled pike 4.00
1511	Pikeman, unarmoured, raised pike 4.00
1512	Pikeman, armoured, raised pike 4.00
1513	Pikeman, half-armoured, raised pike 4.00
1514	Halberdier, half-armoured, attacking 4.00
1515	Halberdier, armoured, attacking 4.00
1518	Swordsman, with great sword, attacking 4.00
1519	Swordsman, with great sword, attacking 4.00
1520	Reiter, firing pistol 4.00

1522	Mounted Arquebuser 4.00
1523	Lancer, firing pistols 4.00
1524	Gendarme, with plume, on caparisoned horse 4.00
1525	Gendarme 4.00
1526	Imperial Stradiot 4.00
1578	Polish Winged Hussar 4.00

TURKS	
1600	Household Spahi 4.00
1601	Turkish Spahi 4.00
1603	Delli 4.00
1606	Janissary Arquebuser 4.00
1607	Janissary with half-pike 4.00
1608	Turkish Archer 4.00
1609	Turkish Spearman 4.00
1610	Turk with scimitar & buckler 4.00
1611	laylar, with sword 4.00
1619	Turkish Mounted Command 4.00



RAL PARTHA -25 mm

THE SAMURAI

The armies of Japan in the age of the feudal lords at war. The feudal lords fought the unifying forces of the Tokugawa shoguns.

Cavalry Packs: 3 Horses, 3 Riders. Infantry Packs: 6 Figures.

S-745	Ninja, with sword 4.00
S-747	Ninja, with short bow 4.00
S-748	Ninja, with kusarigama 4.00
S-751	Ronin, with sword 4.00
S-752	Ronin, with spear 4.00
S-753	Ronin, with naginata 4.00
S-756	Ashigaru, with sword 4.00
S-757	Ashigaru, with spear 4.00
S-758	Ashigaru, with naginata 4.00
S-759	Ashigaru, with arquebus, standing 4.00
S-761	Ashigaru, with arquebus, kneeling 4.00
S-762	Gun Shields for ashigaru (12) 4.00
S-765	Samurai, with sword 4.00
S-767	Samurai, with sword 4.00
S-768	Samurai, with spear 4.00
S-770	Samurai, with naginata 4.00
S-772	Samurai, with bow 4.00
S-773	Samurai, with bow 4.00
S-775	Mounted Samurai, with spear 4.00
S-776	Mounted Samurai, with sword 4.00
S-777	Mounted Samurai, with bow 4.00
S-780	Samurai Commanders 4.00
S-786	Infantry Standards 4.00



RAL PARTHA -25 mm

THE ROYAL ARMIES OF THE HYBOREAN AGE

Armies and personalities from the age of Conan.

Cavalry Packs: 3 Horses, 3 Riders.

Infantry Packs: 6 Figures.

HYBOREAN ADVENTURE PACKS

AV-400	Martial Arts Maidens, Armed & Unarmed	2.25
AV-401	Travelling Magician, with Ape Thrall and Dancing Wench	3.00
AV-402	Mounted Hero, with Lance & Two-Handed Sword (2 Poses)	3.75
AV-403	Armoured Retainer, with Lance & Axe (2 Poses)	3.75
AV-404	Chivalrous Hero, with Two-Handed Sword (3 Poses)	3.75
AV-405	Northern Chieftains on Caparisoned Horses	3.75
AV-406	Northern Raider Hero, with Morning Star, Sword & Spear (3 Poses)	3.00
AV-407	Captains and Leaders	3.75
AV-408	Ranger with Bow	1.25
AV-409	Dragonmarch Knight, with Sword & Lance (2 Poses)	3.75
AV-410	Dragonmarch Superhero & Retainers	3.00
AV-411	Dragonmarch Heroes	2.25
AV-412	Eastern Hero, with Two-Handed Sword (Mounted & Dismounted)	3.00
AV-413	Eastern Hero, with Spear (Mounted & Dismounted)	3.00
AV-414	Jihad Warrior, with Spear, Sword & Bow (3 Poses)	3.75
AV-415	Jihad Warriors, Mounted, with Spear & Sword	3.75
AV-416	Goblin Wolf Riders (2)	3.75



04-144



AV-400

04-136

PERSONALITIES

04-001	Hero	1.25
04-021	Female Warrior	1.25
04-022	Female Priestess	1.25
04-023	Female Thief	1.25
04-031	Red Priest	1.25
04-047	Ape	1.25

AQUILONIA

04-101	Black Dragon Cavalry, with Lance	4.50
04-102	Black Dragon Cavalry, with Sword	4.50
04-106	Black Legion, with Spear	4.00
04-107	Black Legion, with Sword	4.00
04-111	Aquilonian Cavalry, with Lance	4.50
04-112	Aquilonian Cavalry, with Axe	4.50
04-113	Poitainian Cavalry, with Lance	4.50
04-114	Poitainian Cavalry, with Two-Handed Sword	4.50
04-121	Heavy Infantry, with Sword	4.00
04-122	Heavy Infantry, with Spear	4.00
04-124	Gunderman Pikeman, Pike levelled	4.00
04-125	Gunderman Pikeman, Pike upright	4.00
04-136	Bossonian Archer	4.00
04-141	Cavalry Command	4.50
04-143	Infantry Command Group	4.50
04-144	Gunderman Command Group	4.50

TURAN

04-201	Elite Heavy Cavalry, with Lance	4.50
04-202	Elite Heavy Cavalry, with Two-Handed Scimitar	4.50
04-206	Immortal Infantry, with Spear	4.00
04-207	Immortal Infantry, with Two-Handed Scimitar	4.00
04-211	Heavy Cavalry, with Lance	4.50
04-212	Heavy Cavalry, with Scimitar	4.50
04-221	Infantry, with Spear	4.00
04-222	Infantry, with Scimitar	4.00
04-223	Infantry, throwing Spear	4.00
04-231	Horse Archer	4.50
04-235	Levy Archer	4.00
04-241	Cavalry Command Group	4.50
04-246	Infantry Command Group	4.50

NEMEDIA

04-306	Royal Guard, with Spear	4.00
04-307	Royal Guard, with Sword	4.00
04-312	Knight, with Mace	4.50
04-313	Knight, with Sword	4.50
04-314	Mounted Adventurer, with two-Handed Sword	4.50
04-321	Nemedian Foot, with Spear	4.00
04-322	Nemedian Foot, with Sword	4.00
04-323	Nemedian Foot, with Mace	4.00
04-324	Adventurer, with Spear	4.00
04-325	Adventurer, with Two-Handed Sword	4.00
04-336	Archer	4.00
04-341	Infantry Command Group	4.50

04-511	Guard of The Citadel	4.00
04-551	Southrom Heavy Spearman	4.00



AV-408



04-325



04-323



04-307

PERSONALITIES

The Best miniatures of the U.S.A. for Canadian customers.
Our best selling figures. Monsters, heroes and villains for your Role Playing game.
This is the Ral Partha Flagship range.

ES-1	Evil Wizard, casting spell	1.25	ES-67	Armoured Giant	3.75
ES-2	Super Hero, with axe on Super Heavy Horse	3.75	ES-68	Dragon	7.50
ES-3	Balrog	4.75	ES-69	Djinn (2)	3.75
ES-4	Cleric, cloaked, with staff	1.25	ES-70	Dwarves (4)	3.75
ES-5	Winged Gremlin	1.25	ES-71	Unicorn, with Princess Rider	3.75
ES-6	Patriarch	1.25	ES-72	Cold Drake (Dragon)	7.50
ES-7	Serpent Creeper	1.25	ES-73	Clerics (3)	3.75
ES-8	Zaftig Maiden	1.25	ES-74	Ligard and Wraith Rider	4.75
ES-9	Barbarian Hero	1.25	ES-75	Barbarian Heroes (3)	4.75
ES-10	Hill Troll	3.00	ES-76	Elf Personalities (4)	4.75
ES-11	Vallor, Warrior of the Gods	1.25	ES-77	Female Demons (3)	3.75
ES-12	Vallor, Captain	1.25	ES-78	Hillmen (3)	4.75
ES-13	Assassin	1.25	ES-79	Heroines (3)	4.75
ES-14	Vampire (Count Dracula)	1.25	ES-80	Lizard and Rider	3.75
ES-15	Super Hero, with Axe (Dismounted ES-2)	1.25	ES-81	Armoured Balrog	4.75
ES-16	Beowulf (Nordic Hero)	1.25	ES-82	Black Prince, on armoured horse	3.75
ES-17	Pegasus	4.75	ES-83	War Dragon, with Knight	9.75
ES-18	Adventurer	1.25	ES-84	Evil Lord, on litter, with Bearers	9.75
ES-19	Angel of Death	3.50	ES-85	Amazons (3)	4.75
ES-20	Mummy	1.25	ES-86	Evil Winged Beast	4.75
ES-21	Elf Princess	1.25	ES-87	Female Creatures (3)	3.75
ES-22	Elf Lord	1.25	ES-88	Golems Iron & Clay (2)	3.75
ES-23	Shield Maiden	1.25	ES-89	Witch King on Flying Charger	4.75
ES-24	"Foregum" Super Hero, bare-chested	1.25	ES-90	Storm Giant	4.75
ES-25	Super Hero in Plate Armour, on Super Heavy Horse	3.75	ES-91	Elf Hero, Mounted & Dismounted	4.25
ES-26	Adventurer on Horseback	3.00	ES-92	Servants: Hag, Hunchback, Slavegirl, Noki Nuki	4.25
ES-27	Ranger, Mounted and Dismounted	4.25	ES-93	Anti-Paladin, Mounted & Dismounted	4.25
ES-28	Gremlin War Party (3)	3.75	ES-94	Golden Dragon	15.00
ES-29	Sorceress	1.25	ES-95	Jabberwock	4.25
ES-30	Wraith	1.25	ES-96	Hippogriff	4.25
ES-31	Dwarf Lord	1.25	ES-97	Grendel	3.00
ES-32	Centaur, with spear	3.00	ES-98	Ogre	3.00
ES-33	Satyr (Pan)	1.25	ES-99	Armoured Giant Mounted on Armoured War Elephant	10.00
ES-34	Land Dragon, with Captain	3.75			
ES-35	Land Dragon, with Lancer	3.75			
ES-36	Witch	1.25			
ES-37	Monk	1.25			
ES-38	Winged Panther	3.75			
ES-39	Imp War Party (3)	3.50			
ES-40	Were Bear	3.00			
ES-41	Wind Lord	1.25			
ES-42	Paladin (dismounted)	1.25			
ES-43	Armoured Knight (dismounted)	1.25			
ES-44	Roomen War Party (3)	3.75			
ES-45	Earth Demon (Elemental)	4.75			
ES-46	Undead War Band (3)	3.75			
ES-47	Armoured Centaur	3.50			
ES-48	Demon of Evil Law	1.25			
ES-49	Tree Shepherd	3.75			
ES-50	Wyvern	1.25			
ES-51	Griffon	3.75			
ES-52	Hill Giant	4.75			
ES-53	Siren	1.25			
ES-54	Ghoul	1.25			
ES-55	Enchantress	1.25			
ES-56	Enchanter	1.25			
ES-57	Frost Giant	4.75			
ES-58	Bard	1.25			
ES-59	Fire Giant	3.75			
ES-60	Dungeon Lady, with pet dragon	1.25			
ES-61	Werewolf	1.25			
ES-62	Trill	3.75			
ES-63	True Troll	3.75			
ES-64	Air Elemental	3.00			
ES-65	Demon (2)	3.50			
ES-66	Wizard Pack (3 Necromancer)	3.75			



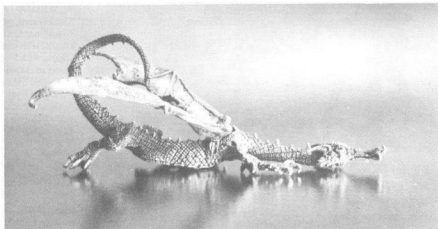
ES-90



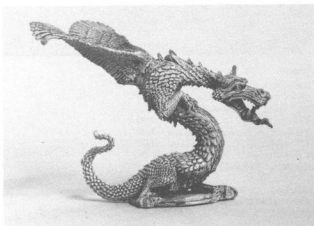
ES-22



ES-92



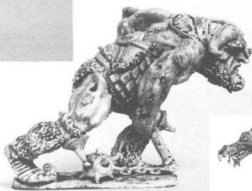
ES-94



ES-72



ES-66



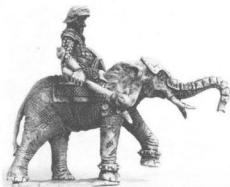
ES-67



ES-68



ES-81



ES-99



ES- 5



ES-82



ES-51



ES-25

RAL PARTHA -25 mm

PERSONALITIES

(continued)

01-01	Evil Wizard	1.25
01-07	Winged Serpent	3.75
01-10	Hill Troll	3.00
01-11	Angel	3.00
01-12	Archangel	3.00
01-24	Barbarian, Super Hero with Axe	1.25
01-34	Land Dragon with Captain	3.75
01-35	Armoured Centaur	3.75
01-47	Armoured Centaur	3.50
01-52	Hill Giant, with raised club	4.75
01-72	Cold Drake	7.50
01-100	Hellhound with Wraith, Mounted and on Foot	4.25
01-101	Mechanical Knight, on Foot and Mounted	4.25
01-102	Highwayman, Mounted and on Foot	4.25
01-103	Bugbears	4.25
01-104	Wizard with Flying Demon mounted and on Foot	4.75
01-105	Three Headed Troll	4.25
01-106	Half Elves	4.75
01-107	Briarose Knight on Bumblebee, mounted and on Foot	4.75
01-108	Titan	4.75
01-109	Cloud Giant (2 pcs)	7.50
01-110	Devils (3), with Separate Heads (4)	4.75
01-111	Demons (3), with Separate Heads (4)	4.75
01-112	Paladin, Foot and Mounted	5.00
01-113	Gargoyles (3)	5.00
01-114	Thieves (4)	4.75
01-115	Half Orcs (4)	4.75
01-116	Bella Donna Knight on Plague Fly	5.00
01-117	Boogic Men (3)	4.25
01-118	Giant Were Bear and Man	4.75
01-119	Oriental Were Creatures: Were Tiger (1), Fox Spirit (2)	4.75
01-120	Cutthroats (4)	4.75
01-121	Hill Giant	4.75
01-122	Bandersnatch and Jub Jub Bird	4.25
01-123	Drakken	3.75
01-124	Warriors of Chaos (4)	4.75
01-125	Champion of Chaos mounted and on foot	4.25
01-126	Lord of Chaos mounted and on foot	4.25
01-127	The Black Prince's Chariot of Fear	15.00
01-128	Brigands' Treasure Caravan	11.00
01-129	Celestial Dragon - includes Red Copper Dragonscale™	7.50
01-130	Guardian Knights of the Temple of Law (2)	3.00
01-131	Lawful Brothers of Eagles borne (2)	3.00
01-132	The Chaotic Ones (2)	3.00
01-133	Guardians of Doom (2)	3.00
01-134	Lawful Fighting Companions (2)	3.00
01-135	Lawful Swordmasters (2)	3.00
01-136	Chaotic Knights of the Doom Legion	3.00
01-137	Chaotic Knights of the Skull	3.00
01-138	Black Dragon	7.50
01-139	Blue Dragon - includes Dark Blue Dragonscale™	7.50
01-501	Bronze Dragon of Pern	30.00
01-900	Troll with Club	3.50
01-901	Armoured Troll with Club	3.50
01-902	Troll with Metal Tipped Club	3.50

Tom Meier Miniatures

01-301	Greater Troglodytes in Chitin Armour	3.00
01-302	Greater Troglodytes with sword stars	3.00
01-303	Greater Troglodytes Guardians with Halberds	3.00
01-304	Troglodyte War Party I	3.00
01-305	Troglodyte War Party II	3.00
01-306	Troglodyte War Party III	3.00
01-307	Staridrim, The Drow Elf Lord	3.00
01-308	Artlyn, The Sylvan Thief	3.00
01-309	Esgalduin, The Sea Elf Guardian with Magic Swan Shield	3.00
01-310	Fealor, The Grey Elf Warrior	3.00
01-311	Dwyndolyn, The Sylvan Elf Warrior	3.00
01-312	Ardriel, in Three Guises: Thief, Mage, Warrior	3.00
01-313	Troll-Giant	3.50
01-314	Brass Dragon	7.00

"Personalities"

The "300" series is presenting a new approach to Ral Partha packaging. This group will be Dungeon Player Characters with three figures per pack.

These packs contain a playing piece for starting out, another playing piece that depicts improvement, and yet another of the same figures as a master.

01-315	Fighter (3)	3.50
01-316	Ranger (3)	3.50
01-317	Magic User (3)	3.50
01-318	Hobbit Thief (3)	3.50
01-319	Elf Thief (3)	3.50
01-320	Paladin (3)	3.50



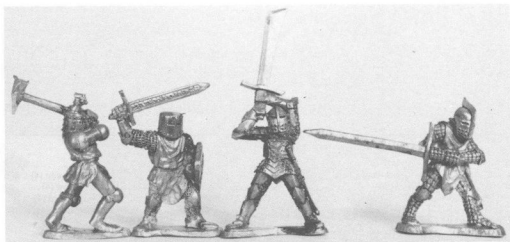
01-119



01-102



01-138



01-134

01-135

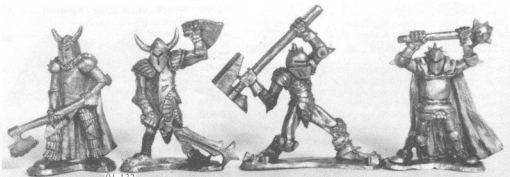


01-100



01-136

01-137



01-132

01-133



01-130

01-131

FANTASY COLLECTOR SERIES

Elves, dwarves and goblins for battle games or dungeon war parties.

CS-01	Wood Elf, with bow	4.00
CS-02	Wood Elf, with bow and sword	4.00
CS-03	Wood Elf, firing bow	4.00
CS-04	Wood Elf, with pike	4.00
CS-05	Wood Elf Cavalry, with spear	4.50
CS-06	Sea Elf, upright pike	4.00
CS-07	Sea Elf, advancing with pike	4.00
CS-08	Sea Elf, with great sword	4.00
CS-09	High Elf, striking with axe	4.00
CS-10	High Elf, with sword	4.00
CS-11	High Elf, advancing with sword	4.00
CS-12	High Elf, with spear	4.00
CS-14	High Elf, firing bow	4.00
CS-15	High Elf Cavalry, with great sword	4.50
CS-16	Elf Horse Archer	4.50
CS-19	Elvin Command Group	4.50
CS-20	Elf Chariot	12.00
CS-21	Deep Elf, firing bow	4.00
CS-23	Deep Elf, with halberd	4.00
CS-25	Deep Elf, Cavalry, with lance	4.50
CS-26	Halflings with spears & slings (8)	4.00
CS-27	Halflings with bows & syles (8)	4.00
CS-28	Halflings with axes & swords (8)	4.00
CS-29	Mounted Halflings with clubs & axes (4)	4.50
CS-30	Dwarf Steam Cannon	15.00
CS-31	Dwarf, striking with spear	4.00
CS-33	Dwarf, with Axe	4.00
CS-34	Dwarf, with two-handed sword	4.00
CS-35	Dwarf, striking with axe	4.00
CS-36	Dwarf, striking with hammer	4.00
CS-37	Dwarf, striking with mattock	4.00
CS-38	Dwarf, with crossbow	4.00
CS-39	Dwarf Command Group	4.50
CS-50	Goblin-Imp, with spear (8)	4.00
CS-51	Goblin-Imp, with sword (8)	4.00
CS-52	Goblin-Imp, in wolfskin, with sword (8)	4.00
CS-53	Goblin-Imp, throwing spear (8)	4.00
CS-54	Goblin-Imp, with halberd (8)	4.00
CS-55	Goblin-Imp, archer (8)	4.00
CS-60	Goblin, with scimitar and shield	4.00
CS-61	Goblin, with mace and chain	4.00
CS-62	Armoured Goblin Archer	4.00
CS-63	Goblin Archer, loading	4.00
CS-64	Goblin Archer, firing	4.00
CS-65	Goblin, sword, armoured	4.00
CS-66	Goblin, with two-handed axe	4.00
CS-67	Goblin, with halberd	4.00
CS-68	Goblin, with club	4.00
CS-69	Goblin Command Group	4.50
CS-70	Orc, with spear overhead	4.00
CS-71	Orc, with bow	4.00
CS-72	Orc, with sword	4.00
CS-73	Orc, with spear	4.00
CS-75	Orc, with mace	4.00
CS-78	Orc War Machine	20.00
CS-79	Orc Command Group	4.50
CS-90	Great Wolf	4.50

CS-91	Great Wolf	4.50
CS-93	Wolf & Wolf Rider, with javelin (4)	4.50
CS-94	Wolf & Wolf Rider, with bow (4)	4.50
CS-95	Wolf & Wolf Rider, with sword (4)	4.50
CS-96	Wolf & Wolf Rider, with spear (4)	4.50

"All Things Dark and Dangerous"

02-301	Fighter in Platemail Runesword with shield	1.25
02-302	Paladin with Great Sword	1.25
02-303	Ranger in Mail with Sword	1.25
02-304	Chaotic Warrior with Great Sword	1.25
02-305	Charging Fighter (assorted weapons)	1.25
02-401	Great Fire Dragon	7.50
02-402	Skeletons (2)	2.50
02-403	Weretiger	1.25
02-404	Gargoyle	2.00
02-405	Demond	2.00
02-901	Hydra	4.25
02-902	Female Giant	3.75
02-903	Centaur	4.25
02-904	Executioner, Victims, Guard & Basket	4.75
02-905	Saurian	3.50
02-906	Ogre	3.50
02-907	Two-headed Ogre	3.50
02-908	Manticore	3.75
02-909	Unicorn	3.00
02-910	Lions	3.50
02-911	Attack Dogs	3.00
02-912	Giant Rats	3.00
02-913	Female Swashbuckler (Mounted and on Foot)	4.25
02-914	Rhino Rider (Mounted and on Foot)	4.25
02-915	Knight (Mounted and on Foot)	4.25
02-916	Fighters	3.75
02-917	Fighter Mage (3)	3.75
02-918	Thieves (3)	3.75
02-919	Wandering Adventurers (3)	3.75
02-920	Lizard Men (4)	4.75
02-921	Non Human Warrior Thieves (4)	4.25
02-922	Gnomes (4)	3.75
02-923	Chimera (1)	3.75
02-924	Mage - mounted/on foot	4.25
02-925	Rangers (3)	3.75
02-926	Clerics (3)	3.75
02-927	Female Warriors (3)	3.75
02-928	Wyyvern (large)	4.75
02-929	Gnolls (4)	3.75
02-930	Bison Rider, mounted and on foot	4.25
02-931	Fighting Paladin	1.25
02-932	Anti-Hero	1.25
02-933	Half-Elf Champion	1.25
02-934	Barbarian Giant	4.25
02-935	Dark Hag on Nightmare	3.50



CS-71



CS-12



CS-36



CS-60

Cavalry Packs: 3 Horses, 3 Riders.
Infantry Packs: 6 Figures.



CS-35

CS-31



02-912



02-911

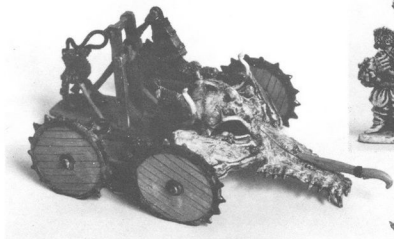
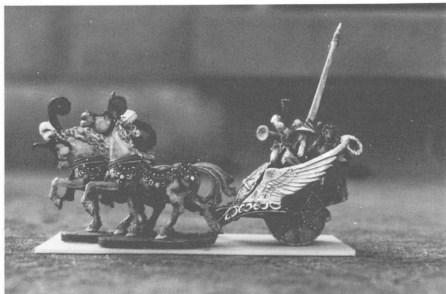


CS-70



02-910

CS-20



CS-78



CS-39



02-915



02-909



02-908



02-916

RAL PARTHA -25 mm

DUNGEON ACCESSORIES

Re-equip your character, or add a little spice to your miniatures collection.

D-01	Shields (12)	3.50
D-02	Scrolls, Books and Wands	3.50
D-03	Treasure Maps and Treasure	3.50
D-04	Shields (12)	3.50
D-06	Dungeon Accessories	3.50
D-08	The Rack with an Executioner	3.50
D-10	Female Captive slung over Horse	3.50
D-11	Female Captive slung over Land Dragon	3.50
D-500	Weapons (24 Assorted)	3.50

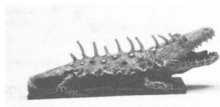
CHILDREN OF THE NIGHT

Uglies for those dungeon and open air encounters.

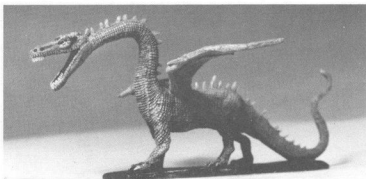
CN-01	Small Cold Drake	4.25
CN-02	Hill Giant	4.25
CN-03	Trolls	4.25
CN-04	Small Carnosaurs	4.25
CN-05	Megalosaurus	4.25
CN-06	Monoclonius Agathaumas	4.25
CN-07	Victims	4.25
CN-08	Vampire Lord Set	3.75
CN-09	Voodoo Man Set	3.75
CN-10	Insect Men Warriors	4.25
CN-11	Lesser Demons	4.25
CN-12	Manticore	4.25
CN-13	Were Creatures	4.25
CN-14	Slimes and Jellies	3.75
CN-15	Thieves	4.25
CN-16	Shadow Elf Sorcerers	4.25
CN-17	Giant in Mail Armour	4.75
CN-18	Allosaurus Fragilis	6.50
CN-19	Brontotherium and Rider	6.50
CN-20	Cyclops	4.75
CN-21	Werewolves (3)	3.75
CN-22	Undead (3)	3.75
CN-23	Assassins (3)	3.75
CN-24	Hunchbacks (3)	3.75
CN-25	Royal Dragon	6.50
CN-26	Diatryma and Phorachus	3.50
CN-27	Great Dragon	20.00
CN-28	Fire Breathing Salamander	3.75
CN-29	Gorgonopsian War Dog	4.25
CN-30	Ceratopsus Nasicornus	4.25
CN-31	Two-headed Ogre with Lunch	4.75
CN-32	Therapsid Carnivores (2)	4.25
CN-33	Wurm	7.50
CN-34	Harpies (2)	4.25
CN-35	Samurai Player Characters (4)	4.25
CN-36	Thieves and Brigands (3)	4.25
CN-37	Priests and Sorcerers (4)	4.75
CN-38	Dwarf Player Characters (4)	4.75
CN-39	Japanese Ogre with Naginata	4.25
CN-40	Women Magic-Users (3)	4.25
CN-41	Serpent Men Heroes (3)	4.25
CN-42	Atlantean Heroes (3)	4.25
CN-43	Amphibian Berserker	3.75
CN-44	Armoured Amphibian Hero	4.25
CN-45	Ninja Assassins (3)	4.25
CN-46	Oriental Dragon	7.50
CN-100	War Eagle	15.00
CN-101	Atlantean War Mastodon	15.00



CN-20



CN-28



CN-25



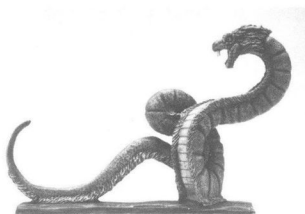
CN-11



CN-100



CN-19



CN-33



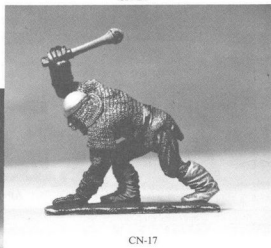
CN-22



CN-24



CN-26



CN-17

RAL PARTHA -25 mm

TWENTIETH CENTURY PLUS

The gangsters and G-men of the roaring twenties and depression thirties.



20-105



20-108



20-109



20-112



20-101	Adventurer	1.25
20-102	Adventress	1.25
20-103	Aviator	1.25
20-104	Private Investigator	1.25
20-105	Detective	1.25
20-106	G-Man	1.25
20-107	Ace Reporter	1.25
20-108	Gang Boss	1.25
20-109	Moll	1.25
20-110	Professor	1.25
20-111	Gangsters (3)	3.00
20-112	Police (3)	3.00

RAL PARTHA -25 mm

THE ADVENTURERS

Theme packs of top quality figures. An excellent way to start a miniatures collection.

AP-01	Wizards & Clerics (8)	7.50
AP-02	Adventurers (8)	7.50
AP-03	Monsters (6)	7.50
AP-04	Goblins (8)	7.50
AP-05	Fantasy Knights (4)	7.00
AP-06	Dungeon Party (8)	7.50
AP-07	Rangers (4)	7.00
AP-08	Skeleton Warriors (6)	7.00
AP-09	Witch's Lair (8 pieces)	7.00
AP-10	Wizards & Clerics II (8)	7.50
AP-11	Monsters II (6)	7.50
AP-12	Dungeon Party II (8)	7.50
AP-13	Female Adventurers (8)	7.50
AP-14	Wizard's Room (8 pieces)	7.50
AP-15	Berserkers (8)	7.50



AP-01



AP-02



AP-06

RAL PARTHA -25 mm

THE BEST OF RAL PARTHA

THE BEST OF RAL PARTHA - BOXED SETS

10-300	Ral Partha "Personalities" (10)	9.75
10-301	Demon, Trolls and Orcs (10)	9.75
10-302	Angel, Elfs and Elf Lords (10)	9.75
10-303	"Children of the Night" (10)	9.75
10-304	Dungeon Fiends	9.75
10-305	Adventure Fellowship	9.75
10-306	Fantasy Champions (10)	9.75
10-307	Mystic Masters (10)	9.75

"The Master Piece Collection"

Boxed Sets

10-308	High Chivalry (10) All New Figures	9.75
10-309	The Ungrateful Dead (10) All New Figures	9.75

"10th Anniversary Collection"

10-410	Bear Chariot of the Icelands	15.00
10-411	Wasteland Raiders	15.00
10-412	"Ral" Lord of the Balrogs	15.00



RAL PARTHA -25 mm

ADVENTURE PACKS

Figures from our battle gaming lines repacked for the benefit of role-playing gamers.



AV-700



AV-900



AV-102

The packs contain from 3 to 6 figures.

AV-100 Elf Band I	3.75
AV-101 Elf Band II	3.00
AV-102 Elf Band III	3.75
AV-103 Elf Band IV	3.75
AV-104 Elf Band V	3.75
AV-130 Dwarf Band I	3.75
AV-131 Dwarf Band II	3.00
AV-150 Goblin Imps	3.75
AV-160 Goblin Band I	3.75
AV-161 Goblin Band II	3.75
AV-170 Giant Goblins	3.75
AV-190 Goblin Imps on Wolves	4.50

AV-200 Northern Raiders	3.75
AV-201 Barbarian War Band	3.00
AV-202 Retainers	3.75
AV-203 Medieval War Party	3.75
AV-204 Chivalrous Adventurers	3.75
AV-205 Men At Arms I	3.75
AV-206 Men At Arms II	3.75
AV-207 Heroes	3.75
AV-208 Men of the Sands I	4.50
AV-209 Men of the Sands II	3.75
AV-210 Eastern Warriors	4.50
AV-212 Eastern Warriors III	3.75
AV-213 Mounted Knights	3.75
AV-214 Knight with Retainers	3.75
AV-215 Axemen	3.00
AV-300 City State Heroes I	3.75
AV-301 City State Heroes II	3.75
AV-302 Woodsmen	3.75
AV-303 Palace Guard	3.00
AV-304 Legionaries	3.75
AV-305 Auxiliary Troops	3.75
AV-306 Tribal Warriors I	3.00
AV-307 Tribal Warriors II	4.50
AV-308 Tribal Warriors III	4.50
AV-309 Wizard with Acolytes	3.75
AV-500 Imperial Guard	3.75
AV-501 Double Pay Men	3.75
AV-502 Armoured Knights	3.75
AV-503 Men of the Eastern March	3.75
AV-504 Warriors of The Crescent	3.75
AV-700 Ninja Raiders	3.00
AV-701 Ronin Warriors	3.00
AV-702 Samurai War Party I	3.75
AV-703 Samurai War Party II	4.50
AV-704 Samurai War Party III	4.50
AV-900 Space Combat Team	3.75
AV-901 Troopers in Power Armour	3.75
AV-902 Space Mercenaries	3.00
AV-903 Aliens	3.75

RAL PARTHA -25 mm

ELFQUEST™

The Latest In 25mm Boxed Figurines For Fantasy Role-Playing

96-001 Wolfriders

Includes 12 pieces: Cutter, Treestump, Skywise, Scouter, Pike, Dewshine, Strongbow, Moonshade and Wolves

96-002 Journey To Sorrow's End

Includes 10 pieces: Leetah, Zwoot and Rider, Rayek, Savah, Sun-Toucher, Ember with Choplicker, Suntop, Redlance and Nightfall

96-003 Personalities

Includes 8 pieces: Bearclaw, Madcoil, Olbar Mountain-Tall, Joyleaf, Bone-Woman, Adar, Priest of Gotara and Nonna

96-004 Wolfriders II

Includes 12 pieces: Cutter, Skywise, Strongbow, Nightfall, Treestump, Pike, Scouter and Dewshine

96-005 Quest To Blue Mountain

Includes 10 pieces: Maggoty, Leetah, Cutter, Picknose, Winnowill, Aroree, Lord Voll, Tyldak, Oddbit and Two-Edge

**EYE-CATCHING
FULL-COLOUR
BOXED SETS
ONLY \$9.75 per set.**

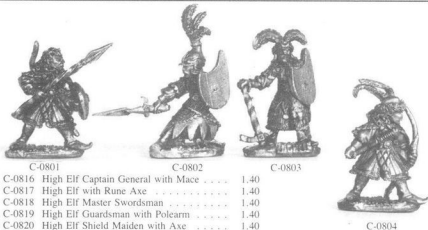


CITADEL MINIATURES -25 mm

HIGH ELVES

Lordly, goodly and proud, these fierce warriors can straighten out whole legions.

C-0801	High Elf Fighter-Thief with Spear	1.40
C-0802	High Elf Warrior in Mail with Sword & Shield	1.40
C-0803	High Elf Hero with Warhammer & Shield	1.40
C-0804	High Elf Light Infantry Bowman	1.40
C-0805	High Elf Heavy Infantry with Polearm	1.40
C-0806	High Elf Prince/Commander in Plate-Mail	1.40
C-0807	High Elf Champion with Mace and Shield	1.40
C-0808	High Elf Fighter/Mage with Two Handed Sword	1.40
C-0809	High Elf Thief	1.40
C-0810	High Elf Heavy Infantry Bowman	1.40
C-0811	High Elf War Maid with Bow	1.40
C-0812	High Elf Warrior with Two Handed Sword & Shield	1.40
C-0813	High Elf Fighter with Axe	1.40
C-0814	High Elf Champion with Broadsword & Shield	1.40
C-0815	High Elf Priestess	1.40



THE SLANN

A proud, old race, now much diminished in numbers, but not in ferocity. Any adventurer can get into trouble with these guys.

C-3201	Kremlo The Slann with Axe	1.25
C-3202	Slann Imperial Herald	1.25
C-3203	Slann Low Swamp Palace Guard	1.25
C-3204	Slann Empire Soldier	1.25
C-3205	Slann Tribesman with Blowpipe	1.25
C-3206	Slann Tribesman with Water Scythe	1.25
C-3207	Slann Shore Warrior Leader	1.25
C-3208	Slann Eunoch Slave Soldier	1.25
C-3209	Slann Slave Master	1.25
C-3210	Slann Slave with Blowpipe	1.25



DARK ELVES

What happens when the lordly elves go bad? It's really EVIL!! Great nasties for your adventure campaign.

C-0901	Dark Elf Witch King	1.40
C-0902	Dark Elf Warrior with Bow	1.40
C-0903	Dark Elf Warrior Loading Crossbow	1.40
C-0904	Dark Elf Woman Warrior with Crossbow	1.40
C-0905	Dark Elf Female Berserker with Two-handed Sword	1.40
C-0906	Dark Elf Female Berserker with Sword & Dagger	1.40
C-0907	Dark Elf Guardsman with Spear & Shield	1.40
C-0908	Dark Elf Female Fanatic with Scimitar & Dagger	1.40
C-0909	Dark Elf Guardsman with Crossbow	1.40
C-0910	Dark Elf Guardsman with Sword & Buckler	1.40
C-0911	Dark Elf Priestess	1.40
C-0912	Dark Elf Witch Queen	1.40
C-0913	Dark Elf Female Fanatic with Sword & Buckler	1.40
C-0914	Dark Elf Guardsman with Sword & Great Bow	1.40

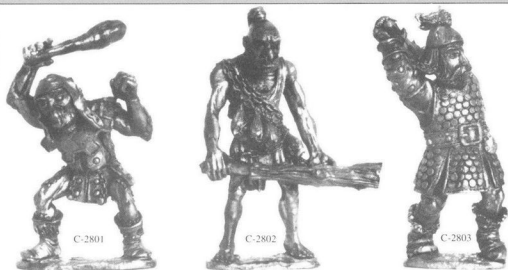


GIANTS

The big thugs for all your campaigns. Supplied with assorted heads and weapons for variety.

C-2801	Giant in Leather Armour	5.00
C-2802	Head Hunting Giant	5.00
C-2803	Giant in Scale Armour	5.00
C-2804	Hill Giant	5.00
C-2805	Cave Giant	5.00
C-2806	Half-Troll Giant	5.00

NOTE: Assembly required.



GOBLIN MUTANTS

The invented imagination of a mad sorcerer produced these crazy combinations of goblin-things. These uglies will hop, slither or grope their way to your heart.

C-2701	Horned Goblin Mutant	1.25
C-2702	Two Headed Goblin Mutant	1.25
C-2703	Club Tailed Goblin Mutant	1.25
C-2704	Long Necked Goblin Mutant	1.25
C-2705	Three Eyed Goblin Mutant	1.25
C-2706	Gargoblin - Goblin Mutant	1.25
C-2707	Hopper - Goblin Mutant	1.25
C-2708	One Eyed Hairy Goblin Mutant	1.25
C-2709	Warted Goblin Mutant	1.25
C-2710	Goblin Mutant with Spines	1.25



REGIMENTS OF RENOWN

The range that you can build your fantasy armies from in all their pomp and splendour.

A series of figures designed and packaged to work with the Fantasy Battle Systems on the market today (Warhammer and Battle).

C-RR01	Knights of Origo Command Group (3)	3.00
C-RR02	Knight of Origo Knights (3)	3.00
C-RR03	Grom's Goblin Guard - Command Group (3)	3.00
C-RR04	Grom's Goblin Guard - Guardsmen (3)	3.00
C-RR05	Mad Mullah Ackland's Death Commandos - Command Group (3)	3.00
C-RR06	Mad Mullah Ackland's Death Commandos - Commandos (3)	3.00
C-RR07	Harboth and the Black Mountain Boys Command Group (3)	3.00
C-RR08	Harboth and the Black Mountain Boys - Privates (3)	3.00
C-RR09	Golg'fag's Mercenary Ogres Officer & Standard	3.00
C-RR10	Golg'fag's Mercenary Ogres Standard & Musician	3.00
C-RR11	Golg'fag's Mercenary Ogres Troopers (2)	3.00



CITADEL MINIATURES -25 mm

THE AMAZONS

Female chauvinists and good fighters, too. A whole race to flesh out your campaign and add colour to your adventure.

C-3001 Amazon - Koka Kalim Devout with Bolt Gun	1.25
C-3002 Amazon - Sisterhood Mage	1.25
C-3003 Amazon - Noblewoman with Spear	1.25
C-3004 Amazon - Queen's Bodyguard with Spear	1.25
C-3005 Amazon - Queen's Bodyguard with Bow	1.25
C-3006 Amazon - Berserker	1.25
C-3007 Amazon - Tribeswoman with Bow	1.25
C-3008 Amazon - Sisterhood Novice	1.25
C-3009 Amazon - Goddess Rigg	1.25
C-3010 Amazon - Mother Samantha High Priestess	1.25
C-3011 Amazon - Tribeswoman Shooting with Bow	1.25
C-3012 Amazon - Koka Kalim with Daggers	1.25
C-3013 Amazon - Koka Kalim with Power Sword	1.25



C-3011

C-3009

C-3012

C-3010

CITADEL MINIATURES -25 mm

MAGIC USERS

A gang of conjurers, sorcerors, warlocks and what not — to blast your enemies into another dimension (or somewhere).

C-0201 Umbra, Bringer of Despair	1.40
C-0202 Amron, Bringer of Hope	1.40
C-0203 Master Necron of the Nether Realm	1.40
C-0204 The Thrower of Mighty Bolts	1.40
C-0205 The Wiz	1.40
C-0206 Oglu the Conjurer	1.40
C-0207 Master Wisemast of Foglon	1.40
C-0208 Witch King of the Swamps	1.40
C-0209 Hegel the Learned	1.40
C-0210 Tutoriel the Druid	1.40
C-0211 Witch Arbela	1.40
C-0212 Reafol, Knower of Useless Knowledge	1.40
C-0213 The Complete Magic User	1.40
C-0214 Gegel the Far Seeing	1.40
C-0215 Feenor the Past Master	1.40
C-0216 Ali Khazam	1.40
C-0217 Glorinda the Manipulatrix	1.40
C-0218 Female Conjurer	1.40
C-0219 Adhumla the Omniscent	1.40
C-0220 Belius the Pompous	1.40



C-0210

C-0202

C-0219

C-0217

CITADEL MINIATURES -25 mm

MOUNTED ADVENTURERS

You're always wanting to be on a horse in your adventure - right? These packages contain the figure both mounted and on foot - your fantasy is complete.

C-3301 Wizard Adventurer mounted and dismounted	4.00
C-3302 Elf Hero mounted and dismounted	4.00
C-3303 Half Orc mounted and dismounted	4.00

CITADEL MINIATURES -25 mm

WARRIORS OF CHAOS

One of the meanest outfits Chaos ever turned out.

WC-1	Ulvar Vileblood	1.40
WC-2	Skathor Skullsmasher	1.40
WC-3	Karbos Bloodhelm	1.40
WC-4	Behmoth Blacksword	1.40
WC-5	Athgul Evilhand	1.40
WC-6	Drakar Deathbringer	1.40
WC-7	Ogroth Darksoul	1.40
WC-8	Morthog Doomaxe	1.40
WC-9	Utamog Elvenbane	1.40
WC-10	Nekris Demonblade	1.40



WC-1

WC-2

WC-3

WC-4



WC-5

WC-6

WC-7



WC-9

WC-10

CITADEL MINIATURES -25 mm

KNIGHTS OF CHAOS

Totally awesome baddies to bully your heroes.

KC-1	Golgothas the Smasher	1.40
KC-2	Gangbald the Screamer with Death Mace	1.40
KC-3	Ulrich Doomface	1.40
KC-4	Nighting in Plate Mail	1.40
KC-5	Telemon Deathbringer	1.40
KC-6	Billy Cleaver	1.40
KC-7	Scartar the Seacher	1.40
KC-8	Thorax of the Hive	1.40
KC-9	Purdah Putridsmell	1.40
KC-10	Yam the Half Ogre	1.40
KC-11	Widowmaker	1.40
KC-12	Gorlax the Bully	1.40
KC-13	Kor the Silent	1.40
KC-14	Scarja Collector of Heads	1.40
KC-15	Bobo the Poisonous with Hand Axe	1.40
KC-16	Baren Spidershield	1.40
KC-17	Dar the Face of Doom	1.40
KC-18	Simplus the Pursuer	1.40
KC-19	Mad John	1.40
KC-20	Arnulf the Ripper	1.40



KC-1

KC-2

KC-3

KC-4



KC-18

KC-16

KC-17

BRIAN ANSELL MINIATURES

Citadel's Bryon Ansell has created these uglies especially for you.

"Heroic Adventurers"

BA-1	Skarlos of Chrystol with Black Doomblade	1.40
BA-2	Peregrine Redshirt the Acolyte	1.40
BA-3	Yamato-Takishi Samurai Warrior of the East	1.40
BA-4	Phaidon Emeritus with Lumitic Crucifix	1.40
BA-5	Odan Grimbeard the Hawk of Iron Fast	1.40
BA-6	Dwarf Olaf Thorginson	1.40
BA-7	Helen of Chrystol	1.40
BA-8	Gavin of Chrystol	1.40
BA-9	Garlon of Chrystol	1.40



BA-1

BA-2

BA-3

BA-4

"Chaos Marauders"

BA-10	Cormanti of Khorne	1.40
BA-11	Arralrack - Ogre Priest of Khorne	3.00
BA-12	Num-Tim Hobgoblin	2.00
BA-13	Enkalon Gorusa	1.40
BA-14	Guardsman Toyne of Chaos	1.40
BA-15	Guardsman Heely of Chaos	1.40
BA-16	Chorsema the Impaler	1.40



BA-5

BA-6

BA-7

BA-8

"Heroes of Chaos"

BA-17	Red Gladiator	1.40
BA-18	Black Gladiator	1.40
BA-19	Skeleton Guardsman of Chaos with spear	1.40
BA-20	Skeleton Guardsman of Chaos with sword & shield	1.40
BA-21	Skeleton Guardsman of Chaos with axe	1.40
BA-22	Skeleton Guardsman of Chaos - Guard Captain	1.40

ARMOURED ORCS

Everyone's favourite nasties have geared up for heavy action.

C-1501	Armoured Orc crouching with bow	1.40
C-1502	Armoured Orc Berserker with 2-handed sword	1.40
C-1503	Armoured Orc Bodyguard with axe	1.40
C-1504	Armoured Orc Chieftain with hand axe	1.40
C-1505	Armoured Orc Warrior with poleaxe	1.40
C-1506	Armoured Orc with javelin and shield	1.40
C-1507	Armoured Orc with crossbow	1.40
C-1508	Armoured Orc advancing with bow	1.40
C-1509	Armoured Orc firing bow	1.40
C-1510	Armoured Orc with sword and shield	1.40
C-1511	Armoured Orc with mace	1.40
C-1512	Armoured Orc General	1.40
C-1513	Armoured Orc with clubs	1.40
C-1514	Armoured Orc with halberd	1.40
C-1515	Armoured Orc Berserker with club and shield	1.40
C-1516	Armoured Orc Captain with scimitar and shield	1.40
C-1517	Armoured Orc with spear	1.40
C-1518	Armoured Orc with scythe and shield	1.40
C-1519	Armoured Orc Guardsman with hand axe and shield	1.40
C-1520	Armoured Orc Warrior with mace and shield	1.40



C-1509

C-1510

C-1511

C-1512



C-1517

C-1518

C-1519

C-1520

FANTASY TRIBES

Peoples and creatures to add to your role-playing game. Complete tribes with leaders, magicians and supporters of fighters, dwarves and dark folk.



FTU-1



FTG-5

FTG-4

FTG-1



FTG-14



FTD-1

FTD-2

FTD-3



FTD-10

FTD-13

FTD-15



FTD-7

FTD-8

FTD-9



FTD-4

FTD-5

FTD-6

FANTASY TRIBE GNOLLS

FTG-1	Gnoll with pole arm	1.25
FTG-2	Gnoll attacking with hand weapon	1.25
FTG-3	Gnoll Standing with hand weapon	1.25
FTG-4	Gnoll Chieftain	1.25
FTG-5	Gnoll Standard Bearer	1.25
FTG-6	Great Gnoll Halbardier	1.25
FTG-7	Great Gnoll with hand weapons	1.25
FTG-8	Great Gnoll on Giant Boar (2 pcs)	2.50
FTG-9	Gnoll on Giant Boar (2 pcs)	2.50
FTG-10	Two Drunken Gnolls	2.50
FTG-11	Female Gnoll	1.25
FTG-12	Gnoll Children (2 figs)	1.25
FTG-14	Gilbert the Goblin	1.25

FANTASY TRIBE DWARVES

FTD-1	Dwarf with spear and sword	1.25
FTD-2	Dwarf with light Crossbow and Sword	1.25
FTD-3	Dwarf with Sword and pole arm	1.25
FTD-4	Dwarf with Mace and Axe	1.25
FTD-5	Dwarf with Axe and Heavy Crossbow	1.25
FTD-6	Dwarf with Axe and Hammer	1.25
FTD-7	Dwarf with Hammer and Pick	1.25
FTD-8	Dwarf Standard Bearer with Axe	1.25
FTD-9	Dwarf Chieftain in Plate Mail with Sword	1.25
FTD-10	Dwarf Trumpeter with Sword	1.25
FTD-11	Female Dwarf	1.25
FTD-12	Dwarf Children (2 figs)	1.25
FTD-13	The Dwarf with no name	1.25
FTD-14	Dwarf Stretcher Party (4 pcs)	2.50
FTD-15	Mounted Dwarf (2 pcs)	2.50

FTU-1	(FTG-13) Gnoll King's Chariot, with Crew & Giant Boars	9.00
FTU-2	(FTD-16) Dwarf War Engine (3 Crew)	5.50
FTU-3	(FTO-13) Orc Riding Giant War-Wyvern	5.50

FANTASY TRIBES (continued)

FANTASY TRIBE SKELETONS

FTS-1	Skeleton, Advancing, with Sword and Shield	1.25
FTS-2	Skeleton, Attacking with Scimitar	1.25
FTS-3	Skeleton, Attacking with Sword	1.25
FTS-4	Skeleton, Charging with Spear	1.25
FTS-5	Skeleton, Attacking with Axe and Shield	1.25
FTS-6	Skeleton, with Bow	1.25
FTS-7	Skeleton, Swinging Club	1.25
FTS-8	Skeleton, Advancing with Trident	1.25
FTS-9	Skeleton, Attacking with Dagger	1.25
FTS-10	Skeleton, Hacking with Sword	1.25
FTS-11	Dwarf Skeleton, with Axe and Shield	1.25
FTS-12	Halfling Skeleton, with Dagger and Shield	1.25
FTS-13	Skeleton King	1.25
FTS-14	Skeleton Priest	1.25
FTS-15	Slain Skeleton	1.25
FTS-16	Grim Reaper	1.50
FTS-17	Skeleton Lord	1.50
FTS-18	Legions of Hell Standard Bearer	1.50

FANTASY TRIBE ORCS

FTO-1	Orc Advancing with Mace and Shield	1.40
FTO-2	Orc Attacking with Sword and Shield	1.40
FTO-3	Orc Advancing with Sword-spear and Shield	1.40
FTO-4	Orc Charging with Spear	1.40
FTO-5	Orc Advancing with Spear	1.40
FTO-6	Orc Swinging Axe	1.40
FTO-7	Orc Firing Bow	1.40
FTO-8	Orc Charging with Polearm	1.40
FTO-9	Orc Advancing with Axe and Spear	1.40
FTO-10	Orc Firing Crossbow	1.40
FTO-11	Orc Chief with Sword and Flail	1.40
FTO-12	Orc Bodyguard with Battleaxe	1.40
FTO-14	Orgron Foul Breath	2.00

FANTASY TRIBE TROLLS

FTT-1	Troll with Tree-Trunk Club	4.00
FTT-2	Troll with Swinging Axe	4.00
FTT-3	Troll, Hurling Rock	4.00
FTT-4	Troll in Chainmail, with Scimitar	4.00
FTT-5	Troll in Furs, with Axe and Shield	4.00
FTT-6	Troll Discipline Master, Whip & Club	4.00
FTT-7	Female Troll, Attacking	4.00
FTT-8	Young Troll	4.00
FTT-9	Giant Half-Troll King (3 parts)	5.00

FANTASY TRIBE ZOMBIES

FTZ-1	Zombie Staggering Forward	1.25
FTZ-2	Zombie Attacking Wildly	1.25
FTZ-3	Zombie with Club	1.25
FTZ-4	Zombie with Butcher's Knife	1.25
FTZ-5	Zombie with Axe	1.25
FTZ-6	Zombie with Butcher's Cleaver	1.25
FTZ-7	Zombie with Spiked Club	1.25
FTZ-8	Slain Zombie	1.25
FTZ-9	Creeping Zombie with Cleaver	1.25

FANTASY TRIBE FIGHTERS

FTF-01	Fighter with sword & buckler	1.40
FTF-02	Unarmoured Fighter with sword & bow	1.40
FTF-03	Fighter in 3/4 Plate Armour	1.40
FTF-04	Barbarian Fighter with two handed sword	1.40
FTF-05	Fighter in full helm with crest	1.40
FTF-06	Eastern Fighter with scimitar	1.40
FTF-20	Impoverished Paladin	1.40
FTF-21	Paladin with mace	1.40
FTF-22	Paladin with hand axe	1.40
FTF-23	Paladin with full pack gear	1.40
FTF-24	Rich Paladin	1.40
FTF-25	Paladin on Quest	1.40
FTF-30	Female Fighter with pack & sword	1.40
FTF-31	Brunhilda Fat Lady Fighter	1.40
FTF-32	Female Fighter in plate armour	1.40
FTF-33	Olga Bone Crusher with mace	1.40
FTF-34	Female Barbarian with sword & shield	1.40
FTF-35	Lila the Swift with scimitar	1.40
FTF-40	Dragon Knight of Chaos in plate armour	1.40
FTF-41	Champion of Chaos with sword	1.40
FTF-42	Female Chaos Warrior with sword, shield & bow	1.40
FTF-43	Captain of Chaos with mace	1.40
FTF-44	Chaotic Adventurer with sword & gauntlet knife	1.40
FTF-50	Adventurer with breast plate & sword	1.40
FTF-51	Cloaked Adventurer with sword or mace	1.40
FTF-52	Adventurer in Chainmail	1.40
FTF-53	Unarmoured Adventurer in ambush	1.40
FTF-54	Adventurer in leather armour	1.40
FTF-55	Truk The Well Provided	1.40
FTF-56	Adventurer Prince Ardleon Lonestar	1.40
FTF-57	Heavy Equipped Adventurer with Crossbow	1.40
FTF-58	Knightly Adventurer with Mail & Shield	1.40
FTF-59	Adventurer with Plate Mail & Cape	1.40
FTF-60	Knightly Warrior in Plate Mail	1.40
FTF-61	Hero in Chainmail with Axe	1.40
FTF-62	Paladin in Plate Mail Double-Armed	1.40
FTF-63	Paladin Berserker	1.40
FTF-64	Chivalric Warrior with Plate & Axe	1.40
FTF-65	Fighter in Veil Helm with Axe	1.40
FTF-66	Fighter in spiked Helm with Broadsword	1.40
FTF-67	Adelaide 'The Hooded Huntress' with Scimitar	1.40
FTF-68	Chivalric Female Fighter	1.40
FTF-70	Norse Warrior with Chain Helm & Spear	1.40
FTF-71	Norse Berserker	1.40
FTF-72	Norse Axeman in Mail Armour with Axe	1.40
FTF-73	Norse Bowman in Leather Armour	1.40
FTF-74	Norse Warrior with Sword & Bow	1.40
FTF-75	Norse Warrior in Fur with Axe	1.40
FTF-76	Young Chieftain in Horned Helm	1.40



FTO-12



FTO-14



FTO-10



FTO-11



FTT-9



FTS-6



FTS-10



FTS-5



FTS-7

FTS-8



FTS-9



FTS-13



FTS-14

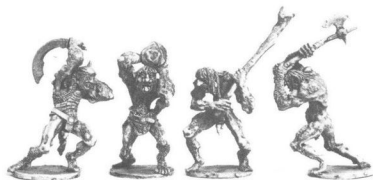


FTS-15



FTS-11

FTS-12



FTT-4 FTT-3 FTT-1 FTT-2



FTZ-1 FTZ-2 FTZ-3 FTZ-4



FTF-56 FTF-57 FTF-58 FTF-59



FTF-60 FTF-61 FTF-62 FTF-63



FTF-68 FTF-70 FTF-71 FTF-72



FTF-73 FTF-74 FTF-75 FTF-76



FTF-05 FTF-31 FTF-03



FTF-50 FTF-22 FTF-21



FTF-02 FTF-01 FTF-20



FTF-54 FTF-04 FTF-51



FTF-30 FTF-40 FTF-42

CITADEL MINIATURES -25 mm WIERD FANTASY

WF-1	Kindly Old Wizard	1.25
WF-2	Airal Servant	1.25
WF-3	The Complete Adventurer	1.25
WF-4	Spaced-Out Druid	1.25
WF-5	Dwarf with Inferiority Complex	1.25

FIEND FACTORY FIGURES

Horrors from everywhere for you to contend with.

FF-1	The Fiend	3.00	FF-36	Medusa	1.25
FF-2	The Lord of Darkness	1.25	FF-37	Giant Worm	3.75
FF-3	Wraith Rider on Undead Mount	3.00	FF-38	Giant Rat	1.75
FF-4	Wraith Rider on Winged Mount	4.75	FF-39	Amazon Berserker with	
FF-5	Winged Demon with Sword & Whip	4.25		Dagger and Axe	1.25
FF-6	Ghost	1.25	FF-40	Berserker with Sword	1.25
FF-7	Ghoul	1.25	FF-41	Berserker with Sword and Axe	1.25
FF-8	Harpy	1.40	FF-42	Bandit with Sword and Shield	1.25
FF-9	White Wizard	1.25	FF-43	Bandit in Chainmail with	
FF-10	Eagle	1.75		Sword and Shield	1.25
FF-11	Treeman	3.75	FF-44	Bucaneer with Sword and Axe	1.25
FF-12	Mountain Giant with Battle Axe	4.75	FF-45	Caveman with Club	1.25
FF-13	Wererat	1.25	FF-46	Caveman with Stone-axe and Spear	1.25
FF-14	Cyclops	1.75	FF-47	Merchant with Dagger	1.25
FF-15	High Giant Swinging Club	1.75	FF-48	Desert Raider with Sword	1.25
FF-16	Two-Headed Troll with Spiked Club	3.75	FF-49	Giant Spider	1.75
FF-17	Minotaur	1.75	FF-50	Giant Scorpion	1.75
FF-18	Wraith	1.25	FF-51	Tentacled Crawler	1.75
FF-19	Werewolf	1.25	FF-52	Skeleton Warrior	1.25
FF-20	Goblin Charging with Swords and Shields	1.25	FF-53	Ogre	1.75
FF-21	Goblin Attacking with Axe	1.25	FF-54	Wyvern	3.50
FF-22	Goblin Firing Bow	1.25	FF-55	Young Dragon	3.50
FF-23	Goblin Advancing with Spear	1.25	FF-56 & 57	Giant Frog and Giant Snakes (3)	1.75
FF-24	Red Orc in Chainmail	1.25	FF-58	Vampyre	1.25
FF-25	Red Orc attacking with Sword	1.25	FF-59	Wight	1.25
FF-26	Red Orc in Armour with Sword	1.25	FF-60	Mummy	1.25
FF-27	Orc with Spear on Giant Wolf (3)	2.50	FF-61	Giant Wyvern	6.00
FF-28	Orc with Spear in Chainmail, on Giant Wolf (3)	2.50	FF-62	Female Red Orc	1.25
FF-29	Orc with Spear in Platemail on Giant Wolf (3)	2.50	FF-63	Red Orc Children (2)	1.25
FF-30	Zombie	1.25	FF-64	Cave Giant	4.25
FF-31	Reptile Warrior with Sword	1.25	FF-65	Ferocious Fish	1.40
FF-32	Golem	1.25	FF-66	Skeleton Rider on Horse of Hell	3.00
FF-33	Great Fire Dragon	7.50	FF-67	Centaur Chief	3.00
FF-34	Chimera	3.00	FF-68	Goat-Headed Ogre	1.25
FF-35	Manticore	3.00	FF-69	Giant Wolf	1.75
			FF-70	Weretiger in Beast Form	1.25



FF-29



FF-5

FF-6



FF-9



FF-67



FF-17



FF-16



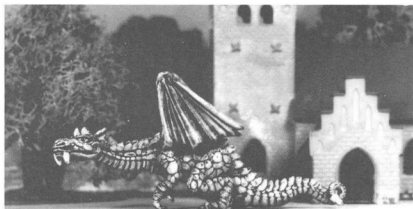
FF-12



FF-18



FF-34



FF-33



FF-8



FF-1



FF-3

FF-2



FF-21

FF-54

CITADEL MINIATURES - 25 mm

FANTASY ADVENTURERS

Characters for you and your friends to apply to your game.



FA-8

FA-11

FA-7



FA-13

FA-21

FA-20



FA-3



FA-10

FA-16

FA-5



FA-19

FA-28

FA-25

FA-1

FA-1	Fighter in Plate Mail with Sword	1.25	FA-18	Female Cleric with Mace	1.25
FA-2	Wizard with Staff	1.25	FA-19	Female Fighter with Breastplate and Sword	1.25
FA-3	Cleric with Cross and Mace	1.25	FA-20	Houri with Dagger	1.25
FA-4	Sneak Thief with Dagger	1.25	FA-21	Evil Wizard	1.25
FA-5	Druid with Sickle	1.25	FA-22	Evil Cleric	1.25
FA-6	Bard with Sword and Lute	1.25	FA-23	Evil Priestess	1.25
FA-7	Monk with Staff	1.25	FA-24	Anti-Hero	1.25
FA-8	Ranger with Sword and Bow	1.25	FA-25	Necromancer	1.25
FA-9	Barbarian with Two Handed Sword	1.25	FA-26	Fighter in Chainmail	1.25
FA-10	Paladin with Sword	1.25	FA-27	Amazon with Sword	1.25
FA-11	Illusionist	1.25	FA-28	Amazon Priestess	1.25
FA-12	Ninja (Assassin) with Sword	1.25	FA-29	Dwarf Champion	1.25
FA-13	Man Beast	1.25	FA-31	Paladin in Full Chainmail	1.25
FA-14	Elvin Hero with Sword	1.25	FA-32	Half-Orc	1.25
FA-15	Dwarf with Two Handed Hammer	1.25	FA-33	Evil Hero	1.25
FA-16	Female Wizard with Dagger and Staff	1.25	FA-34	Gnome - Warrior Thief	1.25
FA-17	Female Thief with Dagger and Sack	1.25			

SCOUNDRELS, ROGUES AND THIEVES

People the back alleys of your city with this range of loveable miscreants. They'll make trouble for the toughest adventurer.

CT-1	Sir Charles Cutpurse High Class Thief	1.25
CT-2	Redbone and Robber with Cloak and Sword, etc.	1.25
CT-3	Digger Moran with Cloak and Hat	1.25
CT-4	Hartak the Unknown with Dagger	1.25
CT-5	Lumo the Bodysnatcher, sculking in Cloak	1.25
CT-6	Fastfingers with Sling	1.25
CT-7	Ali Sin Bad with Scimitar	1.25
CT-8	Mister "B" with Cudgel	1.25
CT-9	Moriarity the Master with Sword and Armour	1.25
CT-10	Boris the Sneak in Furs	1.25
CT-11	Freewheelin' Franklin with Backpack and Sling	1.25
CT-12	Lang Johnnie Mor with Spiked Club	1.25
CT-13	Hassim the Moor in Burnoose	1.25
CT-14	Geeb the Grotty with Club and Leather Armour	1.25
CT-15	Neese the Not So Nice with Stiletto and Spellbook	1.25
CT-16	Stik Pigin with Club	1.25
CT-17	Dirty Pierre with Backpack and Sword	1.25
CT-18	Tom Tom Piperson with Backpack and Sling	1.25
CT-19	Long Lankin with Cloak and Dagger	1.25
CT-20	Melas the Silent with Cape and Knife	1.25

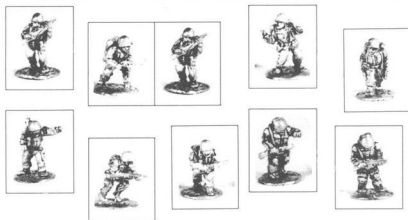


TRAVELLER AND STRIKER SETS

Characters and units for games with 15 mm science fiction figures and for GDW's Traveller game. Striker packs are designed to be complete units for GDW's Striker game.

TRAVELLER SETS		
Set #1	Adventurers	6.00
Set #2	The Military	6.00
Set #3	Ship's Crew	6.00
Set #4	Citizens	6.00
Set #5	Aliens	6.00

STRIKER SETS		
Set #1	Low Tech Infantry Unit (TL 6-8)	6.00
Set #2	Mid Tech Infantry Unit (TL 9-11)	6.00
Set #3	High Tech Infantry Unit (TL 12-13)	6.00
Set #4	High Tech Infantry Unit (TL 14)	6.00
Set #5	Imperial Infantry Unit (TL 15)	6.00
Set #6	Mercenary Striker Unit (TL 14-15)	6.00
Set #7	Vargr Mercenary Unit (TL 13)	6.00
Set #8	Aslan Mercenary Unit (TL 11)	6.00
Set #9	Security Unit	6.00
Set #10	Boarding or Landing Party	6.00
Set #11	Terrorist or Guerilla Unit	6.00



CITADEL MINIATURES -25 mm

WAR OF THE ROSES

The pinnacle of the plate armoured medieval fighting man. Lords and adventurers raised bands of armed men in support of Lancaster or York.

C-2601	Longbowmen (6)	4.00
C-2602	Crossbowmen (6)	4.00
C-2603	Handgunners (6)	4.00
C-2604	Peasants with Polearms (6)	4.00
C-2605	Men at Arms with Halberds (6)	4.00
C-2606	Armoured Footmen with Spears (6)	4.00
C-2607	Armoured Footmen with 2 handed Axes (6)	4.00
C-2608	Officers (3 assorted)	3.00
C-2609	Front Rank Pikemen, Armoured	4.00
C-2610	Musician and Herald	2.50

C-2611	Front Rank Pikeman in 1/2 Armour (6)	4.00
C-2612	Middle Rank Pikeman (6)	4.00
C-2613	Rear Rank Pikemen (6)	4.00
C-2614	Armoured Pikemen in Reserve (6)	4.00
C-2615	Mounted Men at Arms with Lances (3)	4.50
C-2616	Mounted Officer (1)	2.50
C-2617	Mounted Longbowmen (3)	4.50
C-2618	Mounted Crossbowmen (3)	4.50
C-2619	Medium Cavalry with Lance (3)	4.50
C-2620	Light Cavalry with Lance (3)	4.50
C-2621	Mounted Heralds (2)	4.00



C-2601

CITADEL MINIATURES -25 mm

DARK AGES

These were the conquering hordes you might find the last time a millenium came around. Aren't you glad they're only one inch high, today?

DA-1	Arab Cavalry Spearman (3)	4.00
DA-2	Arab Cavalry Swordsman (3)	4.00
DA-3	Arab Heavy Cavalry (3)	4.00
DA-4	Arab Extra Heavy Cavalry (3)	4.00
DA-5	Arab Horse Archer (3)	4.00
DA-6	Arab Spearman (6)	4.00
DA-7	Arab Javelinmen (6)	4.00
DA-8	Arab Slingers (6)	4.00
DA-9	Arab Camel Archer (2)	4.00
DA-10	Arab "Ghazi" Fanatic Infantry (6)	4.00
DA-11	Pack Camel (1)	2.00
DA-12	Byzantine Heavy Cavalry (3)	4.00
DA-13	Byzantine Heavy Cavalry Bowmen (3)	4.00
DA-14	Byzantine Extra Heavy Cavalry (3)	4.00
DA-15	Byzantine Extra Heavy Cavalry Bowmen (3)	4.00
DA-16	Byzantine Cataphract (3)	4.00
DA-17	Trapezite Light Cavalry (3)	4.00
DA-18	Byzantine Heavy Infantry (6)	4.00
DA-19	Byzantine Front Rank Heavy Infantry (6)	4.00
DA-20	Archers (6)	4.00
DA-21	Crossbowmen (6)	4.00
DA-22	Javelinmen (6)	4.00
DA-23	Staff Slingers (6)	4.00
DA-24	Norman Heavy Cavalry (3)	4.00
DA-25	Turkish Cavalry (3)	4.00
DA-26	Petcheneq Light Cavalry (3)	4.00
DA-27	Rus Heavy Infantry (6)	4.00
DA-28	Slav Infantry (6)	4.00
DA-29	Varangian Guardsmen in Full Armour (6)	4.00
DA-30	Arab Archers (6)	4.00
DA-31	Byzantine Heavy Infantry Archers (6)	4.00
DA-32	Byzantine Foot Command (2 Officers, 2 Standards)	4.00
DA-34	Byzantine Mounted Command (Officer, Standard, General)	4.00
DA-37	Arab Foot Command Group (2 Officers, 2 Standards)	4.00
DA-40	Arab Mounted Command Group (Officer, Standard, General)	4.00
DA-43	Viking Command Group (Mtd Chieftain, Foot Officer, Foot Standard)	4.00

DA-45	Viking Berserkers with Axes (6)	4.00
DA-46	Viking Berserkers with Swords and Knives (6)	4.00
DA-47	Viking Heavy Infantry with Axes (6)	4.00
DA-48	Viking Heavy Spearman (6)	4.00
DA-49	Viking Axemen (6)	4.00
DA-50	Viking Spearman (6)	4.00
DA-51	Viking Javelinmen (6)	4.00
DA-52	Viking Archers (6)	4.00
DA-53	Viking Slingers (6)	4.00
DA-54	Viking Swordsman Standing (6)	4.00
DA-55	Viking Swordsman Charging (6)	4.00
DA-57	Viking Cavalrymen (3)	4.00
DA-58	Viking Looters (2)	2.50
DA-59	Carolingian Heavy Cavalry (3)	4.00
DA-60	Carolingian Guard Cavalry (3)	4.00
DA-61	Carolingian Medium Cavalry (3)	4.00
DA-62	Breton Light Cavalry (3)	4.00
DA-63	Lombard Heavy Cavalry (3)	4.00
DA-64	Lombard Medium Cavalry with Kontos (3)	4.00
DA-65	Lombard Medium Cavalry with Javelins (3)	4.00
DA-66	Magyar Light Cavalry with Bow, Javelin and Shield (3)	4.00
DA-67	Carolingian Mounted Command Group (Officer, Standard, General) (3)	4.00
DA-70	Saxon Archers (6)	4.00
DA-71	Staff Slingers (6)	4.00
DA-72	Crossbowmen (6)	4.00
DA-73	Lombard Archers (6)	4.00
DA-74	Carolingian Heavy Infantry (6)	4.00
DA-75	Carolingian Medium Infantry (6)	4.00
DA-76	Carolingian Foot Command (2 Officers, 2 Standards)	4.00
DA-78	Dark Ages Adventurers (3 assorted)	3.50
DA-79	Carolingian Javelinmen (6)	4.00
DA-80	11th Century Light Spearman with Kite Shield (6)	4.00
DA-81	11th Century Heavy Spearman with Kite Shield (6)	4.00

MEDIEVALS

The best of British miniatures for Canadian customers. Armies of Western Europe in the 14th century. Recreate the hosts of Crecy and Bannockburn.

M-1	Peasant, Marching (6)	4.00
M-2	Peasant, Advancing (6)	4.00
M-3	Light Swordsman (6)	4.00
M-4	Light Infantry, with Pole Arms (6)	4.00
M-5	Swordsman, in Aketon (6)	4.00
M-6	Infantry, with Two-Handed Weapons in Gambeson (6)	4.00
M-7	Infantry, in Aketon, with Hand Weapons (6)	4.00
M-8	Armoured Infantry, in Aketon, with Hand Weapons (6)	4.00
M-9	Armoured Halberdier (6)	4.00
M-10	Armoured Swordsman (6)	4.00
M-11	Knight, with Sword (6)	4.00
M-12	Knight, with Two-Handed Weapons (6)	4.00
M-13	Knight, with Hand Weapons (6)	4.00
M-14	Longbowman (6)	4.00
M-15	Armoured Handgunner (6)	4.00
M-16	Crossbowman, in Gambeson	4.00
M-17	Foot Officers (3)	2.50
M-18	Foot Standard Bearer/Spearman (3)	2.50

CAVALRY:

M-101	14th Century Knight, with Sword (3)	4.00
M-102	14th Century Knight, on Armoured Horse with Sword (3)	4.00
M-103	14th Century Knight, on Caparisoned Horse, with Sword (3)	4.00
M-104	14th Century Knight, with Hand Weapons (3)	4.00
M-105	14th Century Knight, on Armoured Horse with Hand Weapons (3)	4.00
M-106	14th Century Knight, on Caparisoned Horse with Hand Weapons (3)	4.00
M-107	14th Century Knight, with Lance (3)	4.00
M-108	14th Century Knight, on Armoured Horse, with Lance (3)	4.00

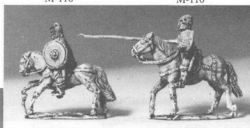
M-109	14th Century Knight, on Caparisoned Horse with Lance (3)	4.00
M-110	14th Century Knight, with Couched Lance (3)	4.00
M-111	14th Century Knight, on Armoured Horse, with Couched Lance (3)	4.00
M-112	14th Century Knight, on Caparisoned Horse, with Couched Lance (3)	4.00
M-113	Mounted Bowman (3)	4.00
M-114	Mounted Armoured Swordsman (3)	4.00
M-115	Mounted Armoured Spearman (3)	4.00
M-116	Armoured Cavalry, with Hand Weapons (3)	4.00



M-17 M-1



M-7 M-13



M-116 M-110



M-18 M-16



M-102



M-109

SAMURAI WARRIORS

A new range of Japanese warriors from the 16th century Momoyama period, suitable for both role playing games and table-top battles.

SAM1	Samurai striking with sword	4.00
SAM2	Samurai swinging sword	4.00
SAM3	Samurai drawing bow	4.00
SAM4	Ashigaru Archer firing bow	4.00
SAM5	Ashigaru Standard Bearer	4.00
SAM6	Ashigaru with naginata	4.00
SAM7	Mounted Samurai with bow	4.00
SAM8	Mounted Samurai with spear	4.00
SAM9	Ashigaru with arquebus	4.00
SAM10	Ashigaru with spear	4.00
SAM11	Samurai with spear	4.00
SAM12	Warrior Monk with naginata	4.00



SAM9 SAM10



SAM3 SAM4



SAM1 SAM2



SAM7 SAM8

Rafm Miniatures -25 mm

JACK TAR

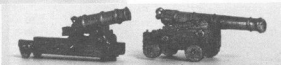
The men who sailed and fought the ships at the beginning of the 19th Century. From Trafalgar to the shores of Tripoli, these are the sea warriors.

JT-01	U.S.A., Officers (2) and Marine (1)	2.50
JT-02	British Naval Officers (3)	2.50
JT-03	French Naval Officers (3)	2.50
JT-04	Sailors with open hands & assorted weapons (3)	2.50
JT-05	Gun crew with open hands & assorted tools (3)	2.50
JT-06	Sailors with musketoon (1) & cutlasses (2)	2.50
JT-07	French Sailors (2) and Marine (1)	2.50
JT-08	British Marines (2) and Marine Officer (1)	2.50
JT-09	Turks (3)	2.50
JT-10	Corsairs (3)	2.50
JT-11	24 lb. Carronade & 12 pdr. Deck Gun	2.50
JT-12	U.S. Marines	2.50
JT-13	British Marines	2.50
JT-14	French Marines	2.50



JT-01

Suitable for use with "Privateers & Gentlemen", role playing game from "Fantasy Games Unlimited"



Designed by Carol Moyer

JT-11



JT-09



JT-07



JT-04



JT-02

Rafm Miniatures -25 mm

ALL THE KING'S MEN

The regular infantry of France and England in the Seven Years War. Go with General Wolfe up the St. Lawrence River to assault Quebec.

6151	British Line Infantry 1759 (6)	4.00
6152	British Grenadier 1759 (6)	4.00
6153	British Line Cmd Group 1759 Officer (2) Std (2) Drummer (2)	4.00
6154	French Line Infantry 1759 (6)	4.00
6155	French Grenadier 1759 (6)	4.00
6156	French Line Cmd Group 1759 Officer (2) Std (2) Drummer (2)	4.00
6157	British Marine 1759 (6)	4.00



6151

6152

6154

6155

6157

Packs contain a painting guide and organization notes.

SIEGE EQUIPMENT

The artillery and war engines of the past. Give your armies and war parties a little muscle. Guaranteed to worry the Baron in his castle.

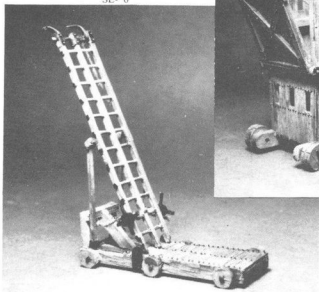
Designed by Bill Schwarz

SE-1	Large Ballista	6.00
SE-2	Large Catapult (Onager)	6.00
SE-3	Small Catapult (2) (Dart Thrower)	4.00
SE-4	Small Catapult (Onager) (2)	5.00
SE-5 & 6	Crow, Heavy Scaling Ladder	10.00
SE-7	Wheeled Siege Shields (3) (Mantlets)	4.00
SE-8	Fire Raiser	7.00
SE-9	Small Siege Tower	12.00
SE-10	Springal (Falarica)	5.00
SE-11 & 12	Battering Ram & Frame/ Testudo	16.00
SE-13	Medieval Cannons: Pot Au Feu & Crecy Cannon	2.50
SE-14	Trebuchet	12.00
SE-15	Scaling Ladders (3) Assorted	4.00
SE-16	Greek Fire Projector	2.50
SE-17	Petryc. c. 1300	5.00
SE-18	Mole	3.00
SE-19	Roman Ballista	9.00
SE-20	Chinese Rope Catapult	3.50
SE-21	Dwarf Crew	4.50
SE-22	Goblin Crew	4.50
SE-23	Medieval Crew	4.50
SE-24	Roman Crew	4.50
SE-25	Greek Successor Crew	4.50
SE-26	Organ Gun	4.00
SE-27	Early Bombard (2)	4.00
SE-28	Hooped Bombard	5.00
SE-29	Large Bombard	10.00
SE-30	Swinging Mantlet	9.00
SE-31	Medieval Breach Loading Cannon	4.00
SE-32	Roman Scorpion Bolt Thrower (2)	3.50
SE-33	Roman Carroballista Bolt Thrower (2)	3.50
SE-34	Elaborate - Organ Gun	5.00
SE-35	Sled Cannon with 4 Crew	5.00

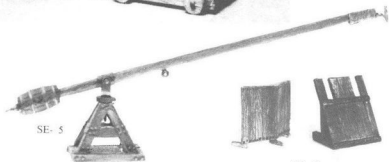
SE-9



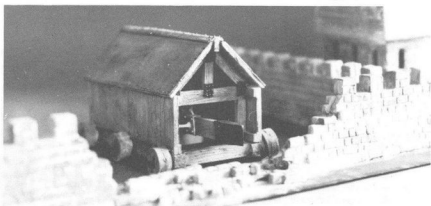
SE-6



SE-5



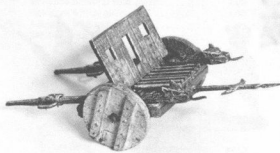
SE-7



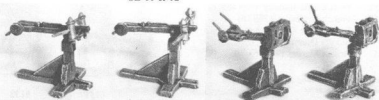
SE-11 & 12



SE-35



SE-34

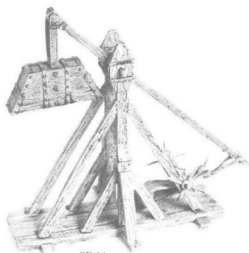


SE-33

SE-32



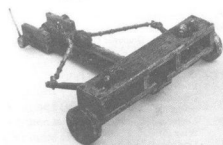
SE-21



SE-14



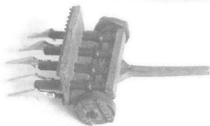
SE-22



SE-19



SE-23



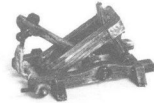
SE-26



SE-24



SE-25



SE-4



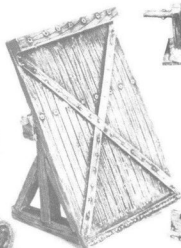
SE-3



SE-20



SE-18



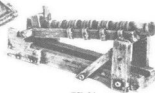
SE-30



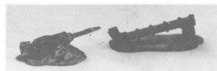
SE-29



SE-28



SE-31



SE-13

BLUE AND GREY

The troops of Lee and Grant recast to fight again.

6601	Union Foot Command Group - Officer (1), Drummer (1), Standards (2)	4.00
6602	Union Cavalry with Carbine (3)	4.00
6603	Union Infantry, in full kit, advancing (6)	4.00
6604	Union Iron Brigade, advancing (6)	4.00
6605	Union, Berdan's Sharpshooter, firing (6)	4.00
6606	Union Infantry, kneeling (6)	4.00
6607	Union Zouave, advancing (6)	4.00
6608	Union Infantry, in Great Coat	4.00
6609	Character Pack - Indian Scouts (2), Duellists (2), Doctors (2)	4.00
6610	Union Artillery Crew (4)	4.00
6611	Confederate Foot Command Goup - Officer (1), Drummer (1), Standards (2)	4.00
6612	Confederate Cavalry Command Group - Officer (1), Guidons (2)	4.00
6613	Confederate Cavalry with Pistol (3)	4.00
6614	Confederate Cavalry with Shotgun (3)	4.00
6615	Confederate Infantry in Slouch Hat, advancing (6)	4.00
6616	Confederate Infantry in Slouch Hat, firing (6)	4.00
6617	Confederate Infantry in Kept, advancing (6)	4.00
6618	Missouri Guerrilla (6)	4.00
6619	Confederate Artillery Crew (4)	4.00
6620	12 lb. "Napoleon" Gun Howitzer (2)	4.00
6621	10 lb. (3") Parrot Rifle (2)	4.00
6622	3" Ordnance (Rodman) Rifle (2)	4.00
6623	12 pdr. Whitworth Breech Loading Rifle (2)	4.00
6624	Artillery Limber (2)	4.00
6625	Artillery Horse Teams and Crew (2 pair)	4.00
6626	Artillery Caisson (2)	4.00



6605

6606

6607

6608



6613

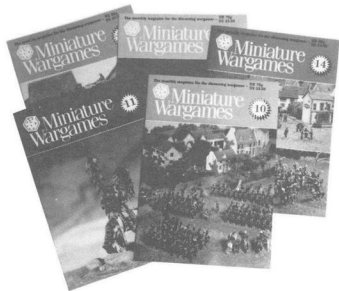


6614

Tentative Release Date: April 15, 1986

MINIATURE WARGAMES

The monthly magazine for the discerning wargamer.



An excellent British-produced magazine that deals extensively with gaming for the miniature gamer.

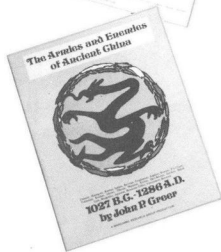
Professional use of the full colour photographs and informative articles make this magazine a significant requisition for the gamer.

PriceCanadian . . . \$4.00

U.S.A. \$3.50

WARGAMES RESEARCH GROUP

Complete selection of England's leader in miniature gaming reference publications and rules sets for the hobby.



Product Code	Description	Retail Price
0100	Armies of the Macedonian & Punic Wars	25.00
0101	Armies of the Macedonian & Punic Wars (Hard Cover)	33.00
0102	Armies & Enemies of Imperial Rome	16.25
0103	Armies & Enemies of Imperial Rome (Hard Cover)	23.00
0104	Armies of the Greek & Persian Wars	13.00
0105	Armies of the Ancient Near East	25.00
0106	Armies of the Ancient Near East (Hard Cover)	33.00
0107	Armies & Enemies of Ancient China	18.75
0108	Armies of the Dark Ages	16.25
0109	Armies of the Dark Ages (Hard Cover)	18.25
0110	Armies of the Middle Ages Volume I	25.00
0111	Armies of the Middle Ages Volume I (Hard Cover)	33.00
0112	Armies of the Middle Ages Volume II	25.00
0113	Armies of the Middle Ages Volume II (Hard Cover)	33.00
0114	Scenarios for Wargames	16.50
0115	Scenarios for Wargames (Hard Cover)	23.00
0116	Programmed Wargames Scenarios	18.75
0117	Programmed Wargames Scenarios (Hard Cover)	23.75
0118	Armies & Enemies of the Crusades	18.75
0200	Army Lists Book I	6.25
0201	Army Lists Book II	6.25
0202	Army Lists Book III	6.25
0203	Army Lists 1420 - 1700	9.00
0300	Wargames Rules 3000 BC - 1485 AD	6.25
0301	Wargames Rules 1420 - 1700	6.25
0302	Wargames Rules 1685 - 1845	5.75
0303	Wargames Rules 1925 - 1950	5.00
0304	Wargames Rules 1950 - 1985	5.00
0305	Rulettes (Renaissance Naval)	1.50
0306	Chinese Chess	7.00

THE BRITISH MILITARY 1803 - 1815

- by S.J. Park and G.F. Nafziger

This book is a complete study of the British Military establishment as it existed in 1803-1815. It covers the internal structure of the British Army from the most junior drummer to the Duke of York, Commander in Chief of Army.

Not only does it cover the various military formations, but it also examines the operations of the cabinet posts and military bureaus that controlled the growth, evolution and daily functions of the British Military.

In addition to the purely British forces, it also addresses those foreign forces that fought with the British in Spain; The King's German Legion, The Brunswick Oels and other foreign contingents.

The book includes complete information on Battalion organization, tactics and formations.

It has the additional feature of providing a complete listing of the services of every cavalry and infantry regiment, plus all the artillery companies from 1803 to 1815. 0007. \$14.00

THE RUSSIAN ARMY 1800-1815

- by George Nafziger

George Nafziger has made a tremendous effort in researching, in detail, the material for this book on the Russian Army.

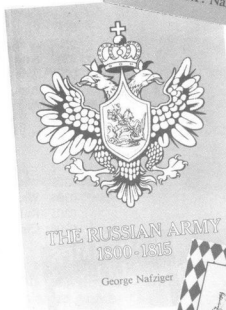
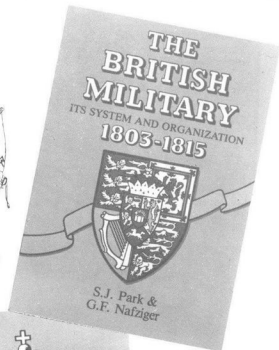
Detailed information is provided on all levels of organizations in the Russian Army - Company, Battalion, Regimental and Divisional - for the 1800-1815 period.

This book has a great wealth of information for the Napoleonic enthusiast. 0006...\$10.00

THE BAVARIAN AND WESTPHALIAN ARMIES 1799-1815

Translated from German sources, this book, organized by George Nafziger, describes the military organization of Bavaria and Westphalia during the Napoleonic era.

The book covers in detail: infantry, cavalry, artillery and ancillary units with information on organization, uniforms, drill and formations. 0005.....\$6.95



PRUSSIAN LANDWEHR AND LANDSTURM 1813-1815

by Peter Hofschröder

On March 16, 1813 Prussia declared war on France. On the 17th, the decree regarding the formation of the Landwehr was brought into effect. This edict called the whole of the Prussian population to arms in areas directly affected by the French.

This book describes the organization of the Landwehr for each campaign season for each province. The strengths of Landwehr formations are given for August and December 1813 and June 1815. The Landwehr played a major role alongside the regulars of the Prussian Army, a contribution that is often underestimated.

The book is complete with illustrations and descriptions of uniforms and maps. 96 Pages. 0009\$12.00

UNIT ORGANIZATIONS OF THE AMERICAN CIVIL WAR

- by Richard J. Zimmermann

The official organizations for the Union Regular, Union Volunteer Armies and the Confederate Army that fought each other during the American Civil War. The organizations of fifteen historical units with strengths and organizational peculiarities, plus six selected orders of battle are included.

Richard Zimmermann has researched the Civil War in great detail to give us a precise and comprehensive study on the period. 72 Pages. 0004\$8.50

NAPOLEONIC ARMIES (reprint)

The organizational details of the armies of Europe that fought for and against Napoleon Bonaparte between the years 1805 and 1815.

Detailed information is provided on company, battalion and regimental structure and strength. The composition of divisions, corps and armies is discussed as well.

Ray Johnson has been researching this subject for over ten years in both North America and Europe. His sources written in English, German and French include some books now out of print.

This reprint is a complete unabridged version of Ray Johnson's "Napoleonic Armies Volume I and II", into One volume. The text has been updated by Ray, with more current information which he has acquired since the original printing.

Napoleonic Armies - 0002 Hard Cover ...\$20.00
0003 Soft Cover ...\$14.00

THE UNIVERSAL SOLDIER

Wargame rules for Ancient, Medieval and Pike & Shot with 25 mm or 15 mm figurines.

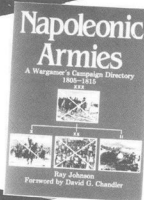
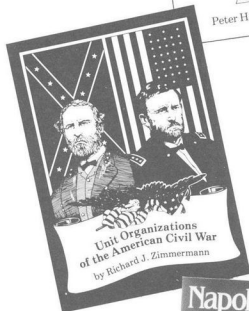
The Universal Soldier Miniatures Rules are comprehensive yet very playable. The game system spans history by allowing each fighting unit to be uniquely assigned its fighting ability, weapons, formation and morale. This information is summarized for many armies in the Appendix.

0001\$7.95
Universal Soldier Unit Sheets AS-4\$3.00

Prussian Landwehr
and Landsturm
1813-1815



Peter Hofschröder



MAKE A MINIATURES GAMING TABLE!

by John Laing

Many gamers have accumulated numbers of gorgeously painted miniatures. They are now feeling a desire to present these in a game setting that befits the colour and action inherent in miniatures. Yet many of us lack the space and talent necessary to produce a good looking tabletop. What follows is a suggestion for overcoming some of these problems on a reasonable budget.

The heart of this system lies in obtaining a sheet of felt. You want to find a fabric store (one that sells cloth by the yard (metre) rather than made up as clothing. Try the local yellow pages under "Fabric" or "Yard Goods", and ask for felt. They should show you large rolls (bolts) of felt in a variety of colours. You must have decided what colour you would prefer. We suggest a medium green, but it will depend on your ideas and what games you expect to play.

You will also want to know how much of this material to buy. It is sold by the yard (metre in Canada) and the sheets are about 5½ feet (1.6 metres) wide if double width or 3 feet wide if single. You must know the approximate size of the most common playing area you will be using and base your felt requirements around this. Your felt should cost about \$8.00 per yard/metre of double width.

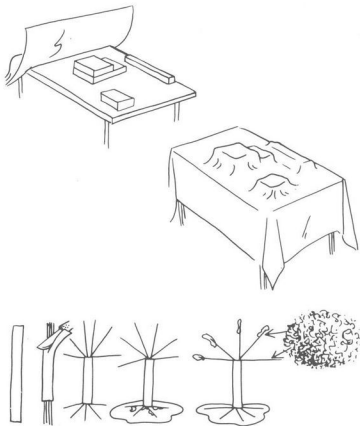
You don't want to buy more than you will need, but a sheet that is too small will not be very satisfactory either. We caution you against buying an over large sheet because you will "someday" have a large table. We suggest 12' (4 metres) as a good basic length. The store will sell you this material in full or half yards (metres), so 2½ yards (metres) (15 feet) is just fine.

Now you have a playing surface that looks better than a bare table or paper map. While you're at the fabric store, buy some felt "squares". These are swatches of this same felt in small sheets usually 9" to 16" square. Get a few in various browns, greys and light blues.

The beauty of this system is that it is colourful, sets off your models while enhancing your imagined gaming area and it is portable. What you just bought weighs about five pounds or less and folds away. You can convert a ping-pong table or the dining room table into your miniature empire easily. You can pack it up when the game is over or when the grumbling from wives or mothers becomes too oppressive to be ignored.

So there is your dining room table covered in your new green sheet. It looks good but a bit bare. Needs hills, right? Okay, lift the sheet for a moment and go get some books (or flat boxes, magazines, small pillows, newspapers etc.) and place these on the table under the cloth. By judicious arrangement of these items you can create hills, valleys and crevasses to suit your needs. Place the felt over this skeleton land. After a few minutes the felt will settle very nicely into the gaps between the books making a nice rolling terrain. If your budget will stretch, or you are a good scrounger you might wish to obtain permanent shapes to place under your sheet. Blocks and sheets of wood, or cork tiles are excellent. The cork tiles usually are about ½" thick and 12" x 12" (30 cm. x 30 cm.) square. They are light, strong and cheap. Styrofoam insulation sheets, cut and shaped are also good.

Now, that's the hills. Take the felt squares you bought earlier. The greys and/or browns can be cut into strips to



represent roads. Similarly the blue squares can be cut in strips for rivers or into patches for lakes/ponds. You will have to decide how wide you need your strips to be. Whatever game you are using may specify widths for roads and streams. Felt squares of other colours can be used to represent wooded areas, fields, built up areas, swamps or anything else you might require.

Some trees and hedges would be nice too, but those model railroad ones at the hobby shop are pricey and you'd need so many of them, right? Well here is a cheap, easy method for quickly producing lots of respectable looking trees.

For this you will need the following: 1. A good fairly heavy pair of wire clippers. 2. A supply of modellers' lichen from your local hobby shop. 3. Bases about the size of poker chips. 4. Some putty that sets in a few hours (epoxy, woodfiller, car body etc). 5. A length of stranded wire rope with a plastic coating (jacket). Allow 3" (75 mm.) for each tree you intend to make. An excellent type is plastic coated clothes-line wire. This has about 5 strands of soft wire which is ideal for our purpose, along with an easily removable jacket. 6. A sharp modeling knife or the kind of tool designed to strip the insulation from coated wire. 7. Glue of just about any kind. White, rubber, model airplane cement, or contact cement are all acceptable.

First, take your clippers and cut the stranded wire into 3'' (75 mm.) lengths. Next, cut away the plastic jacket from each end of the length, baring the wire strands at each end. The best type of wire rope has about 5 strands of fairly soft wire within the jacket. Spread the wires out at both ends. The longer ends should be spread irregularly and out at odd angles. The shorter ends should be spread and bent back as flat (90°) from the axis of the wire as possible.

Now imbed the short flat end in the putty and affix this end on your basing material. Make sure your putty does not react with your base material or your base might warp giving you wobbly trees. This happens when the solvent in the putty attacks the base material, for example wood putty and styrene plastic. A way to get around this is by applying small amounts of putty at a time. Two-part epoxy putty is excellent as it is very adhesive and does not shrink. Let the putty harden.

Once your "tree trunks" are set on the bases you should paint them. The quickest way to do this is by buying a can of spray paint in brown or black. Be careful of fumes and make sure that only your models get sprayed. You can use your model paints if you wish. Let the paint dry.

Now take your glue, and tufts of the lichen and glue the lichen along the spreading "upper branches" of your tree. When the glue dries you should have a forest of passable trees, stable, light and durable. You can now use those deep, dark, and mysterious forests you've dreamed about.

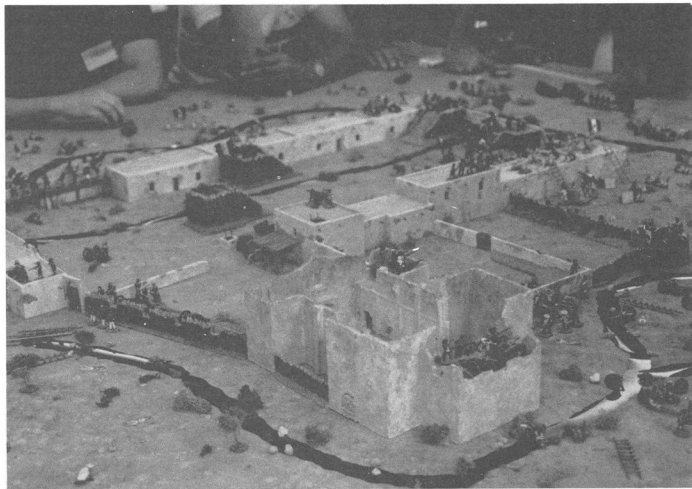
The above article should set you on the way to a present-

able gaming table for miniatures. The advantages of this system lie in its cheapness, and portability.

You will likely want bridges and buildings for this table. Several games are now on the market which include cardboard cut out buildings, and others are available as sets from various companies. Companies such as Greenfield Garisons, The Dwarven Stone Cutter, Gallia and MGB are now producing buildings for the hobby, ask at your local hobby shop for these products. Check the model railroad department of the shop for suitable kits or scratch building supplies. Many hobby magazines occasionally publish plans and suggestions for scratch built buildings. Other companies such as Linka and Dungeon Tiles make parts that are of use to scratch builders.

Does your game require a hex-gridded playing surface? RAFM sells iron-on hex transfers (like on your T-shirt) for application on cloth surfaces. These are in 1'', 2'' and 3'' hexes, in black or white ink. See the RAFM catalogue for price details.

There are many other systems used in producing a gaming table top. Mostly, these require a permanent table devoted only to gaming. We have presented the above as a guide for the first time gamer or the gamer in need of a portable games layout. Remember, a club that has an unstable meeting location could find that this system has advantages in storage and transport. This system is also the most flexible system available for use. Try it, we've used it ourselves for years.



The Alamo Revisited - Origins '85, Baltimore, Maryland.

FOR THOSE OF YOU, WHO HAVE YET TO MAKE A START AT THE ART OF BURYING FINE CAST METAL MINIATURES UNDER LAYERS OF PAINT, HERE IS:

The Absolute Beginner's Guide to Painting Miniatures

by Tony Ackland

THINGS YOU WILL NEED.



Paint - of the wide variety of types that may be used I would recommend the humble tin of enamel, if only because of its availability. Be sure to purchase the matt type (although some gloss black will prove useful). Also, a spray can of matt white will be required.

Thinners - the above paint may be diluted with white spirit or turps substitute.

Brushes - rather than take out a mortgage on the best quality sable, a relatively inexpensive synthetic-sable mix will do to start with. Buy a brush with the longest bristles you feel you can cope with. The less steady your hands, the shorter the bristles should be.

Modelling knife - a modelling knife and some spare blades will be essential.

PREPARING THE MODEL



Remember that an inadequately prepared model will always result in an inferior finish.

Carefully cut and scrape away any excess metal on the model.

Attach the model to some object that you can hold comfortably when you are painting it. One method is to use blu-tac, or similar, to attach it to the bottom of a paint tin.

Lightly undercoat the figure using the spray matt white. Do not try to achieve a brilliant white finish, you will only succeed in obliterating most of the detail on the model. A pale grey colour is all that is required.

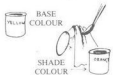
PAINTING THE MODEL

Do not use the paint directly from the tin. Mix the paint thoroughly (a match stick or cocktail stick is useful for this), and place a small amount on an old dish or similar. Dip your brush in thinners, then dip it into the paint. A bottle cap makes an excellent container for thinner and a bit of plastic is a good palette for mixing. Grip the brush *lightly* and, using only the tip of the bristles, apply the

paint to the model. Let the bristles follow the direction of any folds on the figure. Try to ensure that all your brush strokes are made in the same direction. It is far better to apply several thin coats of paint rather than one thick one, but leave sufficient time for each coat to dry thoroughly, as instead of applying a new layer of paint you will be merely lifting the previous coat off. If you wish to apply a light colour of paint over an area you have previously painted with a dark colour then undercoat that area with white paint first.

WASHES AND SHADING

Shading does not have to be difficult, and always improves the appearance of a model. First make a wash. All this consists of is a little paint mixed with some thinners. You will have to practice a while to get the correct proportion of paint to thinners. Washes are lightly brushed over the entire area to be shaded; the colour will run into any folds/creases and leave the raised areas clear. Even if you do not shade all of a figure it is well worth applying a brown wash over any flesh areas on a model, particularly the face. Leave the model to dry at least a full day before applying any washes.



SHADING WASHES SHOULD BE DEEPER TONES, NOT DARKER TONES.

IRON AND STEEL

To get a realistic look to areas that are meant to represent the above two metals, first mix some silver paint with some clear gloss varnish, and then paint on as per normal. When this is dry (leave it for at least a day) apply a wash of gloss black. You should have an effect similar to dull steel.

LAST WORDS

When painting fantasy models the actual choice of colours is very important. Try to get a look at some of the books of fantasy artwork that are available. Also, a good idea is to look through natural history books. A good many ideas can be obtained by observing the natural colours of living things. Above all try to avoid merely copying other figures you have seen.

The Advanced Guide To Painting Your Miniatures

by Peter Armstrong

FOREWORD:

The techniques described in this article have been evolved over five or six years of painting figures. This article will be biased toward using these techniques. Feel free to experiment and find your own methods instead of those used here.

EQUIPMENT

Brush

Paint: Acrylic or Enamel

Colours: Red, Yellow, Blue, Green, Coffee Brown, White, Black

Thinners

Craft Knife

OPTIONAL EQUIPMENT

Primer Spray

Varnish

BRUSHES

Contrary to popular belief, you do not want a double or triple 'O' brush for painting 25mm or even 15mm figures. A best quality sable brush, either a '2' or '3' will be sufficient for most painting needs. Be sure you buy a good brush, though. Anything else will not give the consistent good results that are required. The brush I use is a Windsor & Newton series 3A. These brushes, at the cheaper end of the good brush ranges, are about \$3.50 from a good art shop. Don't be led into buying more than 1 good brush, but do buy a couple of cheap brushes; one for dry brushing and one for black washing. If you're going to use a brush primer, get a cheap brush for that too. Label the brushes for the purpose they are to be used, and be sure not to confuse the two. The good brush should, when wetted and shaped, have as good a point on it as any triple 'O' brush you'll ever find, and it will be able to hold a lot more paint into the bargain. If you're sure to clean the brush after every painting session, the brush should easily last a year.

PAINTS

The first rule of painting is never use gloss.

The chart below shows the relative strengths and weaknesses of the two paints most widely used for figure painting. Average costs of the two paints are: Enamels -70¢ and Acrylics \$3.00. The most expensive paints are usually the metallic and other 'special' colours. Acrylic paints, which are cheap and effective, are the ranges, available from most Hobby Stores. These retail for about \$1.25 a jar. I generally find that acrylics are the

better paint because: a) they work out cheaper in the long run, b) they dry faster than enamels, c) because brushes are cleaned with water, they tend to keep their point longer, and d) they are a lot brighter than enamels. Do not mix enamels and acrylics if you have both, as the bases for these paints, oil and water respectively, do not mix. It is possible to put coats of the two different paints on top of each other, but be sure to wait the maximum drying time (as shown on the chart) before attempting to do this. Also, be sure if using both paints that you do not use the same brush for both.

KNIVES

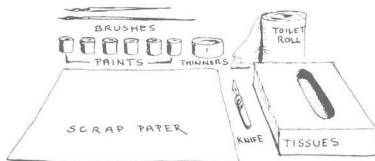
Use a sharp cutting instrument such as the X-acto no. 1 knife. Be sure to have a collection of spare blades.

THINNERS

As mentioned in the Paints section, acrylics only need water, so that's fairly simple to get hold of. For enamels, use turpentine or white spirit (varsol).

WORK AREA

This is quite important. To achieve your best painting results, find somewhere out of the way of little hands or paws, where things can be left to dry and not be disturbed. Make sure you are comfortable. Switch on the radio or tape deck (not the record deck unless you want coloured vinyl records) and relax. The area need not be tidy but it should be well lit, you should have enough room to work and you should have all the things you're going to need within arm's reach. Lay several sheets of scrap paper (I use an old newspaper) on the area where you are going to paint. This serves three purposes: a) it stops your work surface from getting dirty, b) when you are cutting flash from your figures it saves your work surface from knife marks, and c) it can be used as your palette.



TYPE OF PAINT	COST	PERIOD OF USE	DRYING TIME	THINNING AGENT
Enamel	\$.70 - \$1.20	2 - 3 months	1 - 6 hours	Thinners
Acrylic	\$1.20 - \$4.00	1 - 2 years	5 min. - 1 hour	Water

CLEANING YOUR FIGURES

When you purchase your miniatures, they may have a little extra metal on them around the figure in a line. This is called flash, and is caused by metal seeping out of the sides of the mould. Once a mould has been used a few times, this is impossible to prevent. Use a sharp knife to remove the flash, making sure not to obliterate or cut off anything that belongs there. Always make sure the base is flat before painting the figure. Some castings may be darker than others. This doesn't mean there's anything wrong with figures, it's just the temperature of the metal when it is poured into the mould. If the temperature is a few degrees too high, the metal will come out darker. This will not affect the painting of your figure in the slightest. Once primed, all the figures are white anyway.

STARTING TO PAINT YOUR FIGURE

BLACK WASHING

If the figure you are painting is wearing a lot of armour, it is usually best to "black wash" the figure before going on to the next stage of priming. This involves using varnish, enamel black and one of your cheaper brushes. If you've decided to use acrylics, and you don't want to go to the expense of buying the paint and the thinners and the extra cheap brush, then you can get a reasonable substitute with liquid boot polish. Wipe the boot polish onto the figure with a duster or tissue and wipe off the excess. If you're using the paint use the lid of the tin or an old bottle cap to get a thinned (half thinners, half paint) black spirit. Spread the paint liberally on the area to be black washed. Leave the figure for five minutes, then wrap it in a tissue and wipe off all the excess wash through the tissue. The resultant effect is of metal armour fading into black at the deepest points, and any detail the armour may have is clearly depicted. If you've used the boot polish method then you should have the same effect. If you don't have faith in your own ability to paint the other areas without splashing this area, varnish it now (see VARNISHING), as it's a lot easier to clean paint off a varnished surface than it is to clean a painted one. If you want the armour to have an extra shine, scrape the top layer of metal in the areas you require to be shiny.

PRIMING

If the figure you're painting has been black washed then use an enamel white for priming. Cover the parts which

you don't want to show through as metal in white paint and leave it to dry. If you did not black wash the figure, either use the above method or use a spray white. This is necessary because unprimed figures give duller colours, and sometimes it can discolour the paint. Be sure no detail is obscured when you prime the figure. Leave the primer to dry for about a day.

BLOCKING

Blocking is the basic painting technique that everyone uses to paint figures. Dip your brush in the paint, going no more than halfway up the bristles of the brush, and pull your brush in light strokes across the surface of the figure. Never push your brush as this results in bent bristles. Again, make sure you don't obscure any surface detail. If you're painting anything organic, let the edges fade. If it's non organic, then keep the edges crisp and conform strictly to the detail of the figure. When blocking, use a darker shade than you require for the final effect. If you are unsure about what colours to use, consult the colour chart below.

DRY BRUSHING

This is where your second cheap brush comes into use. Dip it into the paint and then wipe most of it off again on your newspaper. Wipe it gently until the paint leaves no mark on the paper. Then wipe the brush across the area you wish to dry brush. This will deposit the lighter shade only on the raised areas of the figure. The edges of these areas, you will also find, have blended with the underlying colour. For this process to work, the coat below, that you wish to drybrush must be fully dry.

HIGHLIGHTING

Pick out the areas you wish to stand out. Usually these will be in the middle of the areas you have just dry-brushed. Mix your paint to a shade lighter than the one you have on the figure, and highlight that area, blending it at the edges with the colour below. This takes a bit of practice, but with time you should get the effect you require.

BLENDING

If you haven't obtained the effect you require using the above techniques, you can try to blend the paint while it's still wet. Put new coats of paint in the areas you require and blend them using your brush until you cannot see where one colour ends and the other begins.

THE COLOUR CHART

COLOUR	BLACK	BROWN	PURPLE	BLUE	GREEN	YELLOW	ORANGE	RED	WHITE
FIRST COLOUR	Black	Dk Brown	Indigo	Navy Blue	Dk Green	Coffee	Brown	Crimson	Grey
DRY BRUSH	Grey	Brown	Purple	Blue	Green	Yellow	Orange	Red	White
HIGH LIGHT	White	Yellow White	White	White	White Yellow	White	White	Yellow	White

For highlighting, it is the base colour and the colour mentioned.

BLACK LINING

If the creases and joins on the figure don't look dark enough, use your brush to finely line the creases and joins. This gives the effect of deepening the crease.

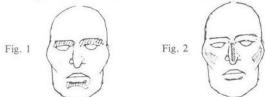
SPECIAL TECHNIQUES FOR SPECIFIC AREAS

FLESH

Flesh is a special case. The colour to use is buff or tan, and lighten it using white. Cover the flesh areas with this colour and, while still wet, add darker areas of pure buff and blend them in. Get a fully blended effect if possible.

THE FACE

Paint your face in basic flesh colour as described above. Then paint the rest of the head as follows:



Paint in the buff areas first. Then paint in the eye ovals in a very light grey (not white). Paint in the eyes in a dark blue or grey for humans, any colour for non-humans. Paint in the iris and spot the eye with white to show its reflective nature. If the monster is very magical, you may wish to paint it a pure white with black outlines. Highlight the cheeks and nose as shown and then put in the eyelids in light flesh, and underline the eyes in buff. Paint in the hair on the beard, moustache and eyebrows the same colour as the hair on the head. Don't forget to do any hair the figure may have on its arms and chest. Paint in the hair and drybrush it with a lighter colour as shown on the colour chart.

FINISHING OFF

VARNISHING

When the figure is completely dry, I would recommend a couple of coats of varnish if you intend to use the figure for gaming. If the figure is for display only, this is not required. The best finish is a matt finish, and for this you can use a spray, such as Testor's Dulcoat, which is very hardwearing and costs about \$3.00 a can. If you do use the brush-on varnish, be sure to wash your brush very thoroughly.

CLEANING

This is the single most important stage in the whole process. To ensure that your brushes last for a long time, you must wash your brushes thoroughly every time you change colour. Use a jar with a deep lid for your thinners, and empty a small amount of thinners into the lid. Use this rather than messing up your whole jar. Drown your brush, and then wipe it on the tissue until it is dry.

EPILOGUE

Just remember, the painter's watchword is EXPERIMENTATION.

Basic Figure Conversions

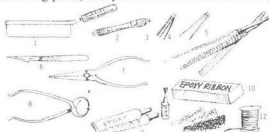
by Tony Ackland

No matter how vast the range of commercially available figures grows, there will always be gaps that the figure manufacturing industry will never be able to fill. The reasons for this vary from lack of commercial viability to the limitations inherent in the production process. If you are one of those people that require a specific figure that seems forever unobtainable, or a currently available figure in a different pose, then there are three options open to you:

- Build a figure from scratch
 - Convert from existing figures
 - Get someone else to do either a) or b)
- What follows is an introduction into option b).

ESSENTIAL TOOLS AND MATERIALS

Before you can do any converting, there are certain basic items which you will require. All of those that you will need are relatively inexpensive and quite easy to obtain. If your local model or hardware shop does not stock any of those given in the following list, look through the advertisements (including the classified columns) in the modelling press, and you will find a mail order supplier.



- 1) RAZOR SAW** - this is the best instrument for performing drastic surgery on white metal figures.
- 2) PIN VISE** - this tool is vital to the process of joining together those parts you have dismembered with the Razer Saw.
- 3) DRILLS FOR 2** - the sizes you will require are 1mm and .8mm diameter.
- 4) NEEDLES FOR 2** - these are ordinary household needles that you can steal or beg from Mother/Wife/Girlfriend.
- 5) A CHEAP SET OF NEEDLES FILES** - white metal clogs and eventually ruins fine files, so get a cheap set that you won't mind replacing periodically.
- 6) MODELLING KNIFE**
- 7) NEEDLE NOSE PLIERS**
- 8) WIRE CUTTERS**
- 9) ADHESIVES** - the type of glue that you will require most is the Five Minute Two Part Epoxy Adhesive. You may also use Cyanoacrylate Adhesive (Superglue) but this is only effective when you have relatively large areas with good surface to surface contact to stick together.

10) FILLER - the best filler is a two part epoxy putty. Such as Loctite Epoxy ribbon. It is also an excellent modelling compound.

11) SANDPAPER OR EMERY CLOTH - a pack of mixed grades such as is available in most chain stores is quite adequate.

12) SOFT WIRE - such as florists wire, brass pins, soft iron or brass wire is also good.

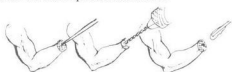
CHOP AND SWAP

The removal of a part from one figure and its replacement by a part from another figure is what forms the basis for the vast majority of figure conversions. The techniques involved in changing over bits of different figures are essentially the same, whether you are swapping over a hand or a complete upper torso. The same techniques can also be used to drastically change the pose that figures are in. The simplest things to swap are heads and hands, and it is the latter that I shall use as an example in technique.

STAGE 1 - Remove the hand that you wish to replace and score the surface of the cut with a modelling knife. Repeat the same operation on the hand that you are using as a replacement.



STAGE 2 - Drill a hole in the stub of the arm. If you make a small hole with a needle first this will make the drilling much easier. Using Five Minute Epoxy Glue affix a length of wire into the hole. At this stage the wire should be longer than needed. Repeat the drilling operation on the replacement hand.



STAGE 3 - Trim down the wire in small stages, fitting the hand on the wire at each stage. When you are satisfied that the hand is in correct relationship to the wrist, glue it into position. Remember that when you removed the hands, excess material may have been lost, and that the correct place for the parts may not necessarily be where they are touching each other.



STAGE 4 - If you have been incredibly fortunate, everything will have fitted together perfectly and no more work will be required, but it's more likely that some filing and filling will be necessary. File the area around the joint and then score it as you did the cuts in Stage 1. Mix some Epoxy putty and apply it around the area of the joint. While the putty is still fresh, remove any excess



with a damp cloth. The setting time of the putty can be shortened by putting it in a warm place e.g. in front of a fire, or on top of a radiator. **DO NOT LET WHITE METAL FIGURES BECOME HOT AS THEY MELT AT QUITE LOW TEMPERATURES.**

STAGE 5 - It is best when swapping figure parts to make your cuts where surface detail is minimal, but the destruction of detail is sometimes unavoidable. The types of detail which are most often wiped out by converting are chain mail, hair and fur. These are quite simple to model using the putty you have used in Stage 4. The notes below are the best way of showing you how to achieve these textures on your figures.

MAIL -- Wait till putty has cured to a stiff consistency. Smooth the surface of the putty. Make a series of diagonal cuts. Make another series of cuts crossing the first series at 90 degrees. With a needle, make a series of holes in between the cuts; as you remove the needle, apply a slight amount of downwards pressure. This operation requires a very light touch, but with a little practice you should soon master it.



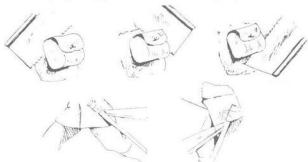
HAIR -- Simply make a series of long unbroken cuts in the direction the hair grows.

FUR -- As for hair, but shorten the cuts and pull upwards at the end of each cut.



ACCESSORIES

Such items as packs and weapons can usually be removed from one figure and applied to another without too much trouble. For larger items, a razor saw is the best implement to use. Do not try to remove the item with a cut from one direction, but rather make a series of cuts from different angles that will meet in the middle. Smaller items, such as sword scabbards, should be removed by a series of gentle cuts. Before affixing to another figure, clean up the edges of the cuts with a file or fine sandpaper. The adhesive to use for these purposes is the superglue type or Five Minute Epoxy.

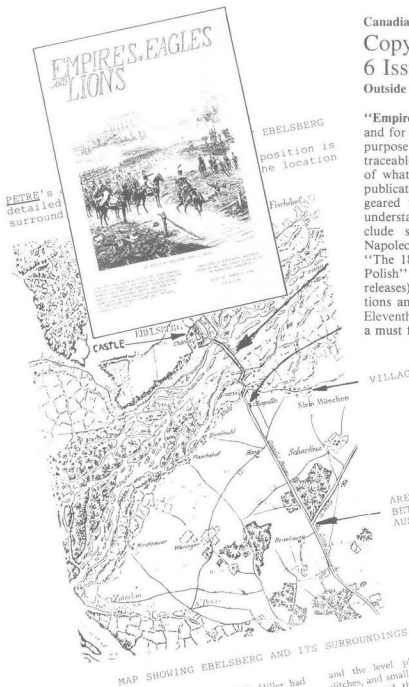


WARNING: Take care when using razor saws and scalpels as particularly nasty cuts can result (these items are very sharp) if you should slip.

REMEMBER: Make all cuts away from yourself.

EMPIRES, EAGLES and LIONS

The Magazine dedicated to Napoleonics



Let us now glance at the position which Hiller had decided to take up. From Wels downwards the Traun flowed close under the heights on its right bank, whilst on the left bank was a level valley about three miles broad, through which it reached the Danube in several branches. It was 15 feet deep in the main stream, with a very rapid current flowing stony bed. It was nowhere fordable, unless the heights on the right fell to Ebelsberg was

and the level plain covered with ditches, and small woods. A little above Krems flowed through a steep-sided valley Traun. The only approach, with the river swollen by rain and melting snow, was over an embanked road and a wooden bridge of some 550 yards in length, and only 15 or 16 feet broad. This defile was easily commanded by artillery on the heights above. The bridge was closed by a tower with a gate only wide enough for one vehicle to pass at a time. Above the bridge on the north was the castle, which commanded a

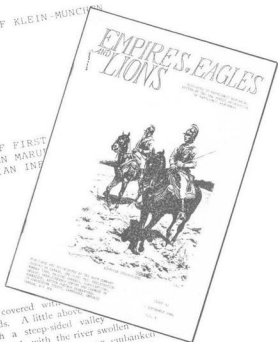
Canadian and U.S.A. prices:

Copy \$3.75

6 Issue Sub. \$18.00 (1 year)

Outside Canada and U.S.A.: 6 Issues \$22.00

"Empires, Eagles and Lions", the Napoleonic magazine by and for the serious Napoleonic wargamer and historian. The purpose is to seek the historical truths and to present data traceable to official sources, not simply a rehash or reprinting of what has already appeared in various English-language publications. The scope of articles presented in each issue are geared towards the individual already possessing a basic understanding of the Napoleonic Era. Regular features include sections entitled "On The Background of the Napoleonic Wars", "The 1809 Campaign Against Austria", "The 1806 Campaign", "The War of 1812", "Flash and Polish" (a look at current Napoleonic and related figure releases), "Book Reviews", "Figure Adaptation", "Questions and Answers", plus many other features. Now in its Eleventh year of publication, "Empires, Eagles and Lions" is a must for your Napoleonic Library.





Rafim Company, Inc.

19 Concession St.,
Cambridge, Ont., Canada
N1R 2G6
1-519-623-4832