

Dragon Tooth Fantasy Figures



NEW RELEASES

Most Dragontooth sets come as kits that require assembly. We recommend these techniques be used by the modeler to achieve the best results.

Use an X-acto knife or rat's tail file to clean off any sprue leads or flash (thin metal feathering along the mold line).

Check the fit of each piece and adjust with knife, file or pliers.

Many of our parts (even heads) are interchangeable between sets. This allows a great deal of variety for the modeler. Decide what piece goes where before gluing.

We recommend Elmer's 5 Minute Epoxy (available through hardware stores) or a similar glue. Set the pieces you will be gluing in a bed of non-hardening plasticene modeling clay. This clay will hold the pieces until the glue sets.

On larger pieces, rubber bands can be used and then cut off.

Finally, if you buy a set that has a broken or missing or incorrect piece, simply drop us a postcard with your name, address and the part you need. We will ship you a replacement part.

When assembly is complete you can paint it. First, use a metal primer as a protective base coat. Then, using your imagination, fantasy illustration or comic book pictures as guides paint the figure using quick-drying brands of paint available at your local toy or hobby store.

COMING SOON, AVAILABLE MAY 15, 1983

17 by 22 inch full color poster of the

Dragon Tooth catalogue cover	\$ 3.00
Dragon Tooth's color catalogue	\$ 2.50

PERSONALITIES:

P42	Elfin thief, or adventurer	\$ 3.75
P43	Celtic Wizard	\$ 3.75
P44	Bullrider, a superhero	\$ 3.75
P45	Wing Chu, Chinese fighter	\$ 3.75
P46	Sword and dagger fighter	\$ 3.75
P47	Swordswoman or thief	\$ 3.75
P48	Celtic warrior prince	\$ 3.75
P49	Dwarf fighter, axe and helmet	\$ 3.75
P50	Dwarf warrior in chainmail	\$ 3.75
P51	Persian adventurer on camel	\$ 3.75

MARVELOUS BEASTIES:

MB 10	Giant winged cat	\$ 7.50
--------------	------------------------	---------

GIANTS:

GI-9	Giant crocodile man	\$ 4.00
-------------	---------------------------	---------

Each Personality Set below contains a beautifully sculpted fantasy adventurer in two dramatic poses, mounted on an action horse and on foot, to represent your character during the various phases of adventuring.

P7	Adventurer or Thief Character	\$3.75
P8	High Elfin Hero-King in Dragon Helm	\$3.75
P9	Rogue or Thief, Skulkingly Caped	\$3.75
P10	Sorcerer, Sorcering	\$3.75
P11	Swordswoman Armed With Sword & Spear ...	\$3.75
P12	Rictus, the Zombie King	\$3.75
P13	Swordsman Kane, in Scale Armour	\$3.75
P14	Sorceress, Sorcering	\$3.75
P15	Cleric in Mitred Helmet with Mace	\$3.75
P16	Fool or Jester, Armed with Sword	\$3.75
P17	Bard or Harpist	\$3.75
P18	Swordsman Roland with Shield Scale Armour .	\$3.75
P19	Elfin Enchanter, Enchanting	\$3.75
P20	Female Thief or Rogue, Caped	\$3.75
P21	Silent Stalker, Stalking	\$3.75
P22	Gladius — Hero in Roman Style Armour	\$3.75
P23	Barbarian Hero Wearing Vulture Helmet	\$3.75
P24	Rachir and Red Archer Ranger/Fighter	\$3.75
P25	High Elfin Warrior Maiden	\$3.75
P26	Gundar the Barbarian with Axe Shield	\$3.75
P27	Subotai the Mongol, Swordsman	\$3.75
P28	Swashbuckler Swordsman and Dagger	\$3.75
P29	Dwarf Adventurer or Thief	\$3.75
P30	Masked Magician	\$3.75
P31	Shaman Casting Spells & Psuedo Dragon	\$3.75
P32	"Brunhilda", Barbarian Warrior Maiden	\$3.75

P33	Ali Baba, Arabian-Type Fighter	\$3.75
P34	Female Ranger with Bow	\$3.75
P35	Witch or Hag with Broomstick	\$3.75
P36	Paladin with Lance and Sword	\$3.75
P37	Halfling Adventurer or Thief	\$3.75
P38	Halfling Female Adventurer or Thief	\$3.75
P39	Fighter with Spear and Sword	\$3.75
P40	Female Dwarf Adventurer or Thief	\$3.75
P41	Halfling Magician	\$3.75



DEMONS:

DE1	Elephant-Headed Demons	\$2.00
DE2	Boar-Headed Demons	\$2.00
DE3	Wind Djinn	\$4.00
DE4	Demon of Terror, Gothmaug, Lord Balrog	\$6.00
DE5	Winged Snake Demon	\$5.00
DE6	Demon of Hell, "Old Scratch"	\$5.00
DE7	Demon Bird-Bear Armed with Axe	\$3.00
DE8	Beelzebub, A Lesser Devil	\$3.00
DE9	Medusa Female Snake Haired Demon	\$3.00
DE10	Syn The She-Devil	\$5.00
DE11	Demon Rising from Hell's Well	\$4.00

GODS AND DEMIGODS

GD1	Horus The Eagle Head God	\$4.50
GD2	Assur The Assyrian Winged Bull God	\$8.00



MARVELOUS BEASTIES:

MB1	Dragon with Dragon Rider.....	\$ 6.00
MB2	Triceratops with Rider	\$ 6.00
MB3	Five Headed Hydra.....	\$ 5.00
MB4	Unicorns — Unicorn Herd	\$ 6.00
MB5	Great Eagle in Flight with Rider	\$10.00
MB6	Griffon with Nest, Eggs, Griffon Chick	\$ 7.00
MB7	Seawitch (Mermaid)	\$ 3.00
MB8	The Sphynx - A Mysterious Riddle	\$ 4.00
MB9	The Great Owl with Armed Rider.....	\$10.00

JEWELRY

Unicorn Pendant Pendant 24KT Gold Plated with Chain — A Great Gift Item	\$10.00
Magic Amulet (2¾" Diameter) with 2 Ft. Chain (An Excellent Gift Item) 24KT Gold Plated.....	\$12.00

MISCELLANEOUS ITEMS FOR YOUR DUNGEONS:

M1	Skulls: Twenty Assorted Human Skulls	\$2.50
M2	Capes: 6 Capes.....	\$2.50
M3	Beastly Torturers, Torturing.....	\$2.50
M4	Torture Rack and Brazier	\$2.50
M5	Gallows and Stocks	\$2.50
M6	Guillotine.....	\$3.50
M7	Human Victims and Parts of Victims.....	\$2.50
M8	Bodies and Booty	\$2.50
M9	Weapons — Swords, Axes and Shields.....	\$3.00

PERSONALITIES:

P1	Wizard, Woodsman, Dwarf King	\$3.00
P2	Goblin (Orc) Captains.....	\$4.00
P3	Pegasi (Winged Horses)	\$3.50
P4	Hippogriff and Unicorn	\$4.00
P5	Saurian Captains and Champions.....	\$4.00
P6	Superhero and Superheroine	\$3.00



GIANTS:

GI-1	Ent (Wood Giant)	\$ 6.00
GI-2	Frost Giants	\$ 5.00
GI-3	Polyphemos Cyclops, One-Eyed Giant.....	\$ 4.50
GI-4	Cumulus, the Storm Giant, Casting Lightning Bolts	\$18.00
GI-5	Horned Hill Giant with Tree Trunk and Sack...	\$ 6.00
GI-6	"Big Meg" and Her Stew Pot. Female Giant...	\$ 7.50
GI-7	"Old Horny", a Horned Cave Giant with a Wooden Club.....	\$ 4.00
GI-8	Hrungnir The Giant Carrying His Loot.....	\$15.00

DRAGONS:

D76	Dragon	\$ 8.00
D78	Dragon — Serpentine Winged Firedrake	\$ 8.00
D79	Dragon — Large Dragon.....	\$12.00
D80	Dragon — Small Dragon	\$ 8.00
D81	Christmas Dragon.....	\$25.00



THE WAR BETWEEN THE SAURIAN EMPIRE AND THE AMPHIBIAN CONFEDERATION

THE SAURIANS (LIZARD MEN):

SB1	Saurian Behemoth — Triceratops with Howdah and Six Lizard Man Crew	\$15.00
SMC1	Champion Mounted on Giant Lizard	\$ 5.00
SMN1	Nobles Riding Armoured Loping Lizards	\$ 5.00
S1	Pikemen	\$ 3.50
S2	Spearmen with Shields	\$ 3.50
S3	Heavy Bowmen	\$ 3.50
S4	Light Infantry Javelineers.....	\$ 3.50
P5	Saurian Captains and Champions.....	\$ 4.00

THE AMPHIBIANS:

AC1	Amphibian Colossus — Giant Horned Chameleon with Howdah and Crocodyli and Randaen Crew of Four.....	\$10.00
AC3	Chariot with Randaen Crew.....	\$ 5.00
AM1	Randaen Light Mounted Troops	\$ 4.00
AMC1	Amphibian Mounted Champion Riding Giant Armoured Lizard.....	\$ 5.00
A1	Crocodylians with Spears and Tortoise Shell Shields	\$ 3.50
A2	Crocodylians with Crossbows.....	\$ 3.50
A3	Randaen Javelineers.....	\$ 3.50
A4	Caiman Troll Crushers with Two Handed Maces	\$ 3.50
A5	Tritonite River Marines with Tridents and Sea Shell Shields	\$ 3.50
A6	Tritonite Deep Sea Marines with Harpoons and Sea Shell Shields	\$ 3.50

OTHER CREATURES AND RACES:

EM1	Mounted Elves — High Elves in Chainmail, Mounted on Charging Horses.....	\$ 9.00
EM2	Mounted Elves in Woodland Garb.....	\$ 9.00
E1	High elves in Chainmail with Spears.....	\$ 3.50
CH1	Chrysaetian Bolt Thrower in the Shape of a Horned Demon, with Two Man Crew	\$ 5.00
CH2	Chrysaetian Titans of the Imperial Guard.....	\$ 3.50
CH3	Chrysaetian Super Heroes & Heroine.....	\$ 4.00
V1	Vulturian Body Cart Drawn by Caped Vulturians.....	\$ 5.00
WE1	War Elephant — African Bull Elephant, Howdah with Battlements and Towers and Seven Man Harradrin Crew.....	\$15.00
T1	Trolls with Hammers.....	\$ 3.00
T2	Armoured Trolls.....	\$ 3.00
B1	Wild Boar-Headed Tribesmen with Spears	\$ 4.00
B2	Wild Boar-Headed Tribesmen with Clubs.....	\$ 4.00
BC1	Command Group with Chieftain, Shaman and Standard Bearer	\$ 4.00
AW1	Arctic Warrior — War Sled Drawn By Polar Bears, Driven by Champion	\$ 8.00
C1	Centaur (Standing)	\$ 3.50
C2	Centaur (Galloping)	\$ 3.50
C3	Centaur Mercenaries Charging in Armour	\$ 3.50



Dragon Tooth



NEW RELEASES

COMING SOON,

CITY OF MAGIC.

TOMB OF THE DWARF KING

Our new NON-PLAYER CHARACTER LINE (NPC) contains characters of three different character classes from races not used as player characters. Each set below is compatible with any FRPG system and contains a Magic User, a Fighter, and a Thief.

NPC-01	Leontynes (Lionmen).....	\$4.00
NPC-02	Stygians (Snakemen).....	\$4.00

GODS AND DEMIGODS

GD3	Thor the god of Thunder	\$4.00
GD4	Kali Ten Armed Goddess of Death	\$5.00

MISCELLANEOUS

M10	Monster Skulls, Assorted Types	\$3.00
M11	Two Lions	\$3.00
M12	Two Tigers	\$3.00

COLOR CATALOGUE\$1.00

CITY OF MAGIC KITS

001	The Magic Shop	\$15.00
002	The Armory	\$15.00
003	Ye Blind Cyclops Inn	\$25.00

MISCELLANEOUS ITEMS FOR YOUR DUNGEONS:

M1	Skulls: Twenty Assorted Human Skulls	\$2.50
M2	Capes: 6 Capes	\$2.50
M3	Beastly Torturers, Torturing	\$2.50
M4	Torture Rack and Brazier	\$2.50
M5	Gallows and Stocks	\$2.50
M6	Guillotine	\$3.50
M7	Human Victims and Parts of Victims	\$2.50
M8	Bodies and Booty	\$2.50
M9	Weapons — Swords, Axes and Shields	\$3.00

Most Dragontooth sets come as kits that require assembly. We recommend these techniques be used by the modeler to achieve the best results.

Use an X-acto knife or rat's tail file to clean off any sprue leads or flash (thin metal feathering along the mold line).

Check the fit of each piece and adjust with knife, file or pliers.

Many of our parts (even heads) are interchangeable between sets. This allows a great deal of variety for the modeler. Decide what piece goes where before gluing.

We recommend Elmer's 5 Minute Epoxy (available through hardware stores) or a similar glue. Set the pieces you will be gluing in a bed of non-hardening plasticene modeling clay. This clay will hold the pieces until the glue sets.

On larger pieces, rubber bands can be used and then cut off.

Finally, if you buy a set that has a broken or missing or incorrect piece, simply drop us a postcard with your name, address and the part you need. We will ship you a replacement part.

When assembly is complete you can paint it. First, use a metal primer as a protective base coat. Then, using your imagination, fantasy illustration or comic book pictures as guides paint the figure using quick-drying brands of paint available at your local toy or hobby store.

©1984 DRAGONTTOOTH, INC.
ALL RIGHTS RESERVED
25 M.M. SCALE ONE INCH EQUALS FIVE FEET
5 M.M. TO THE FOOT

The City of Magic

Your CITY OF MAGIC building is made of Vacuum-formed Styrene plastic. To assemble it: cut each piece out of the sheet with a sharp hobby knife or a good pair of small scissors, follow the edge of the building section or the edge of the tab of a building section where it meets the flat sheet. When all the pieces have been cut out check the fit by temporarily gluing the pieces together with Rubber Cement. First let the Rubber Cement become tacky and then put the pieces together. To assemble permanently use Super or Crazy Glues

In order to paint the building you must first coat it with primer because most paints will not adhere to this plastic and some may even dissolve it. The best primer we recommend using is Gesso which is water soluble, also usable but with extreme care is Floquil's RA9 Primer as it has a powerful solvent in it that can dissolve the plastic. As used as instructed in the spray form it provides an excellent

base for paint as does the Gesso which may be applied with a brush. Once primed, any hobby paints can be used to paint it although water soluble brands like Armory Paints will not harm the plastic under any circumstance.

To assemble the metal pieces in the set we recommend Elmer's 5 minute Epoxy or a similar glue. Super or Crazy glue may also be used. Set the pieces in a bed of non hardening Plastilene Clay until the glue sets to help you hold them together. Clean the excess flash or sprue leads metal from the figure using a good hobby knife like Xacto or Teka brand or a rat's tail hobby file is most useful. To paint the figures use the primers mentioned above and paint with your favorite brand of hobby or figure paints.

When gluing the metal pieces to the plastic pieces we recommend Super or Crazy glue.

Ye Blind Cyclops Inn



This kit is intended to be the spectacular flagship of the City of Magic line for a number of reasons. It is the first kit to include both the interior and exterior of the building. It showcases our ability to achieve fine detail in this plastic, from the pots and pans and spoons on the kitchen wall to locks and keyholes. It has the parts to make a complete two story Inn with numerous guest rooms, storerooms and booths. The building itself captures the mystique of a hard luck, anything goes joint in the Thieves Quarter of the City of Magic. The Inn is run and occupied by 13 characters cast in metal.



The Magic Shop

over 20 metal pieces ranging from tiny detailed magic books and scrolls to use individually, to shelves and bookcases filled with them, the Wizard who owns this shop and his staff of gruesome helpers, even a cobra-like alien customer. Also part of this kit is the magic shop itself in cut-away view.

7 plastic parts have all the detail you could expect from metal and they give to Gamers and Collectors a kit value unmatched by anyone, anywhere.



The Dwarf Armory

This intricately detailed set includes over **35 METAL PIECES** with many individual weapons and tools like; swords, axes, hammers, anvils, pliers, etc. Four dwarves run the shop while they fit a barbarian fighter for armor. Our **HIGHLY DETAILED PLASTIC** armory building comes with easy to assemble instructions and makes the cut-away interior view shown,

PERSONALITIES:

P1	Wizard, Woodsman, Dwarf King	\$3.00
P2	Goblin (Orc) Captains.	\$4.00
P3	Pegasi (Winged Horses)	\$3.50
P4	Hippogriff and Unicorn	\$4.00
P5	Saurian Captains and Champions	\$4.00
P6	Superhero and Superheroine	\$3.00

Each Personality Set below contains a beautifully sculpted fantasy adventurer in two dramatic poses, mounted on an action horse and on foot, to represent your character during the various phases of adventuring.

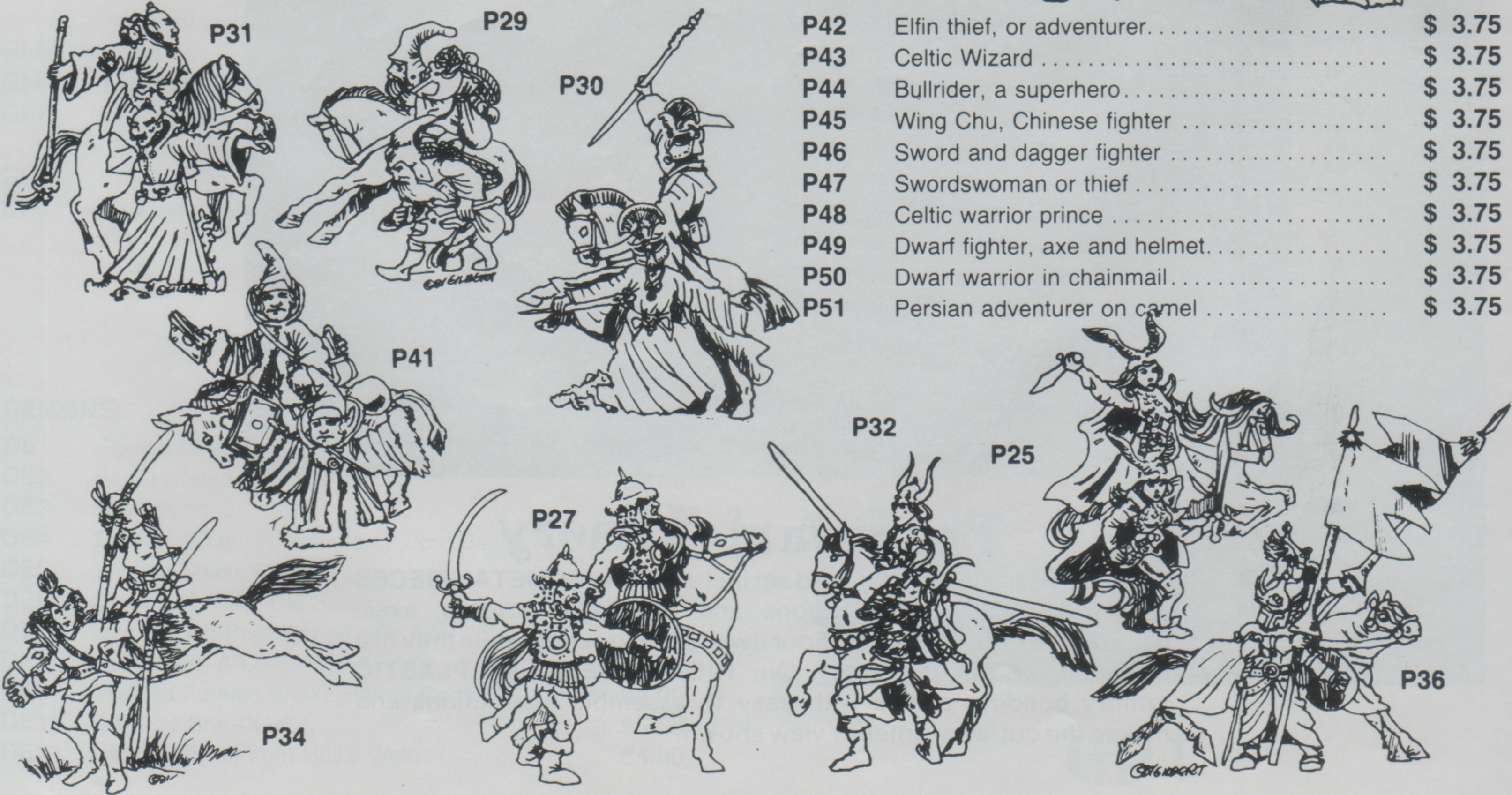
P7	Adventurer or Thief Character	\$3.75
P8	High Elfin Hero-King in Dragon Helm	\$3.75
P9	Rogue or Thief, Skulkingly Caped	\$3.75
P10	Sorcerer, Sorcering	\$3.75
P11	Swordswoman Armed With Sword & Spear ...	\$3.75
P12	Rictus, the Zombie King	\$3.75
P13	Swordsman Kane, in Scale Armour	\$3.75
P14	Sorceress, Sorcering	\$3.75
P15	Cleric in Mitred Helmet with Mace	\$3.75
P16	Fool or Jester, Armed with Sword	\$3.75
P17	Bard or Harpist	\$3.75
P18	Swordsman Roland with Shield Scale Armour ..	\$3.75
P19	Elfin Enchanter, Enchanting	\$3.75
P20	Female Thief or Rogue, Caped	\$3.75
P21	Silent Stalker, Stalking	\$3.75
P22	Gladius — Hero in Roman Style Armour	\$3.75
P23	Barbarian Hero Wearing Vulture Helmet	\$3.75
P24	Rachir and Red Archer Ranger/Fighter	\$3.75
P25	High Elfin Warrior Maiden	\$3.75
P26	Gundar the Barbarian with Axe Shield	\$3.75
P27	Subotai the Mongol, Swordsman	\$3.75
P28	Swashbuckler Swordsman and Dagger	\$3.75
P29	Dwarf Adventurer or Thief	\$3.75
P30	Masked Magician	\$3.75
P31	Shaman Casting Spells & Psuedo Dragon	\$3.75
P32	"Brunhilda", Barbarian Warrior Maiden	\$3.75



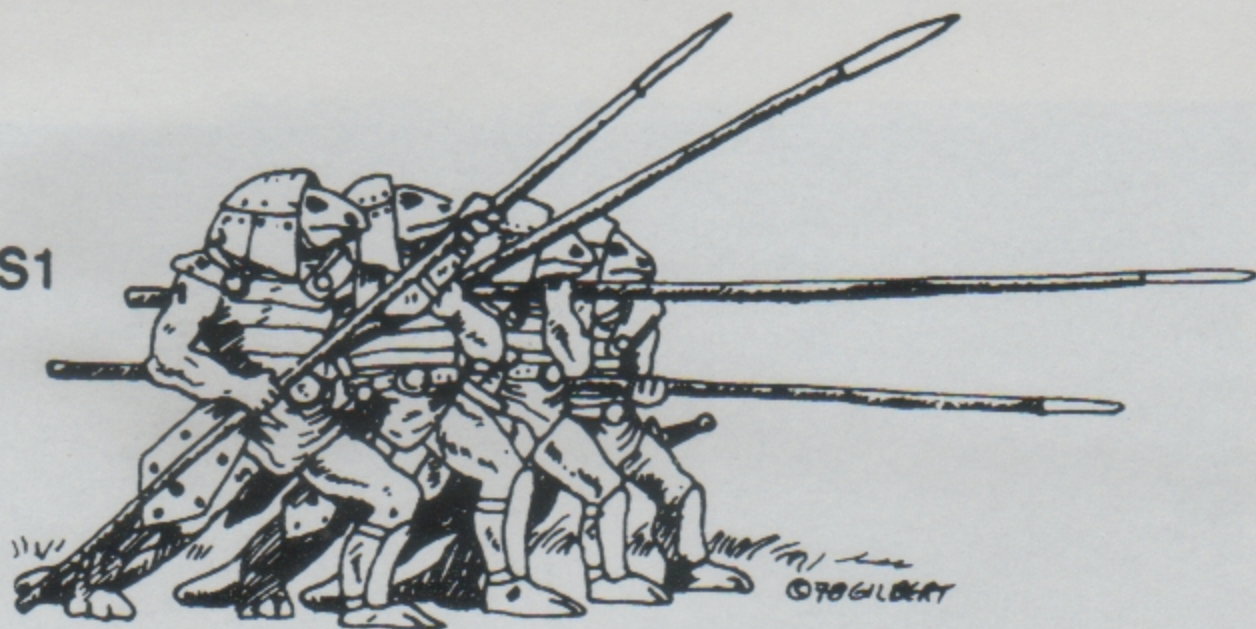
P33	Ali Baba, Arabian-Type Fighter	\$3.75
P34	Female Ranger with Bow	\$3.75
P35	Witch or Hag with Broomstick	\$3.75
P36	Paladin with Lance and Sword	\$3.75
P37	Halfling Adventurer or Thief	\$3.75
P38	Halfling Female Adventurer or Thief	\$3.75
P39	Fighter with Spear and Sword	\$3.75
P40	Female Dwarf Adventurer or Thief	\$3.75
P41	Halfling Magician	\$3.75



P42	Elfin thief, or adventurer	\$ 3.75
P43	Celtic Wizard	\$ 3.75
P44	Bullrider, a superhero	\$ 3.75
P45	Wing Chu, Chinese fighter	\$ 3.75
P46	Sword and dagger fighter	\$ 3.75
P47	Swordswoman or thief	\$ 3.75
P48	Celtic warrior prince	\$ 3.75
P49	Dwarf fighter, axe and helmet	\$ 3.75
P50	Dwarf warrior in chainmail	\$ 3.75
P51	Persian adventurer on camel	\$ 3.75



S1



THE WAR BETWEEN THE SAURIAN EMPIRE AND THE AMPHIBIAN CONFEDERATION

THE SAURIANS (LIZARD MEN):

SB1	Saurian Behemoth — Triceratops with Howdah and Six Lizard Man Crew	\$15.00
SMC1	Champion Mounted on Giant Lizard	\$ 5.00
SMN1	Nobles Riding Armoured Loping Lizards	\$ 5.00
S1	Pikemen	\$ 3.50
S2	Spearmen with Shields	\$ 3.50
S3	Heavy Bowmen	\$ 3.50
S4	Light Infantry Javelineers	\$ 3.50
P5	Saurian Captains and Champions	\$ 4.00

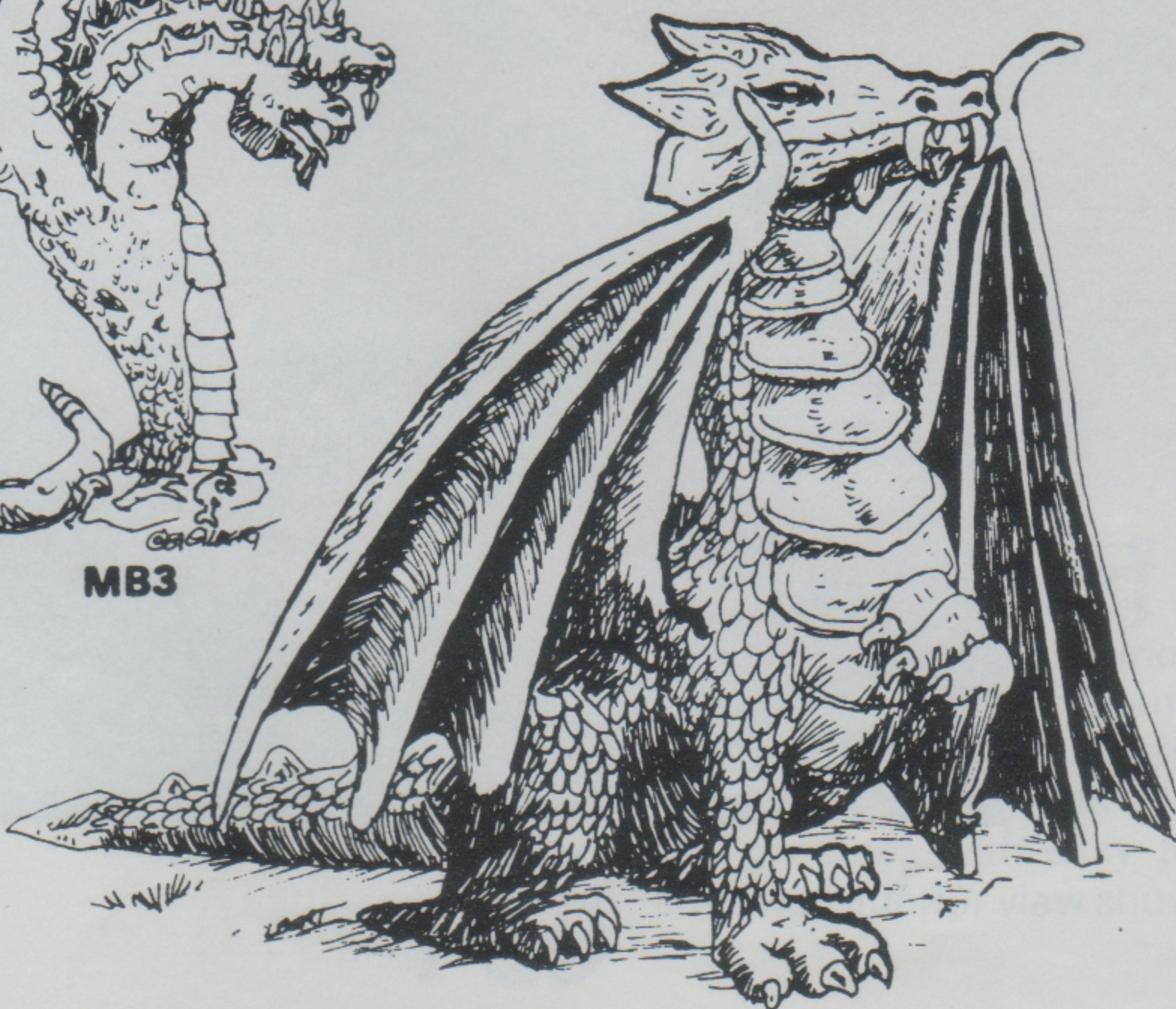
THE AMPHIBIANS:

AC1	Amphibian Colossus — Giant Horned Chameleon with Howdah and Crocodyli and Randaen Crew of Four	\$10.00
AC3	Chariot with Ranidaen Crew	\$ 5.00
AM1	Ranidaen Light Mounted Troops	\$ 4.00
AMC1	Amphibian Mounted Champion Riding Giant Armoured Lizard	\$ 5.00
A1	Crocodylians with Spears and Tortoise Shell Shields	\$ 3.50
A2	Crocodylians with Crossbows	\$ 3.50
A3	Ranidaen Javelineers	\$ 3.50
A4	Caiman Troll Crushers with Two Handed Maces	\$ 3.50
A5	Tritonite River Marines with Tridents and Sea Shell Shields	\$ 3.50
A6	Tritonite Deep Sea Marines with Harpoons and Sea Shell Shields	\$ 3.50



MB3

D76



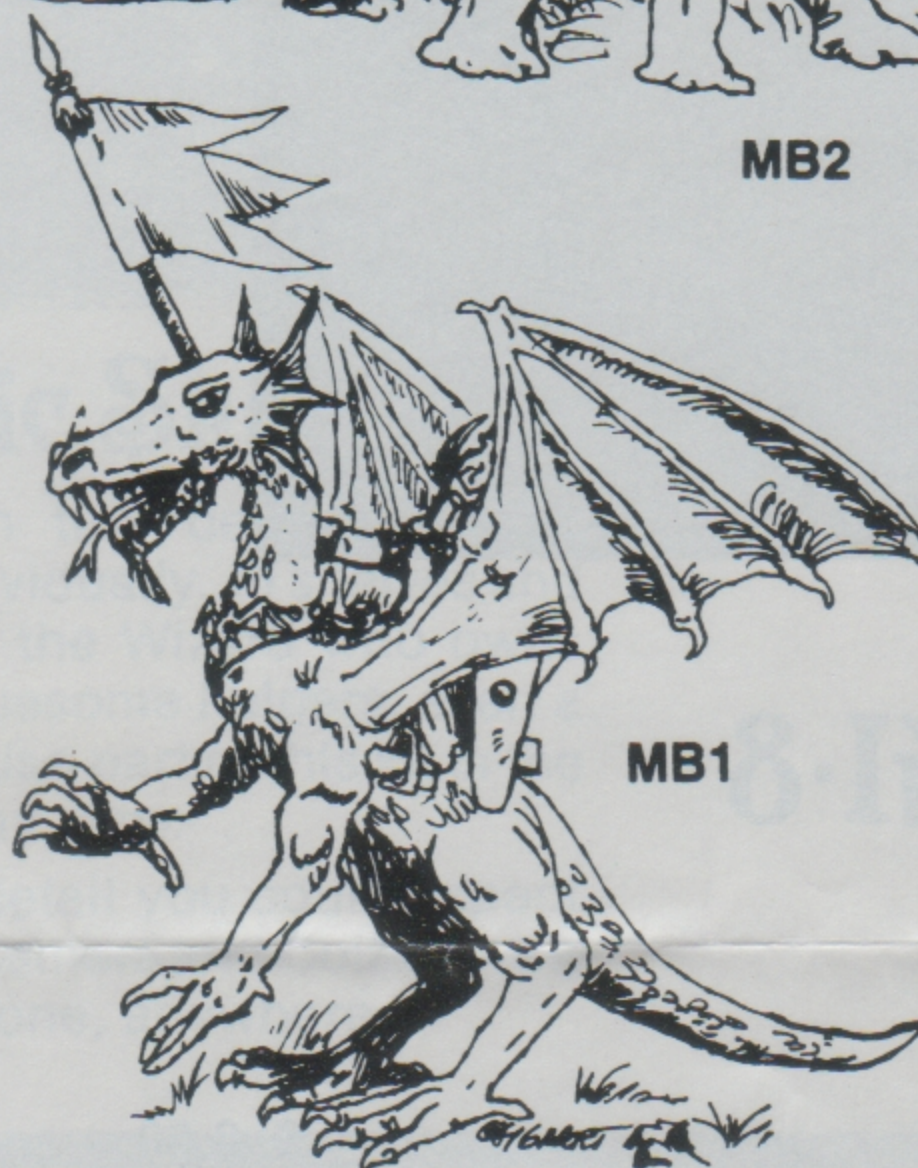
GI-7



A4



MB2



MB1



GI-5

OTHER CREATURES AND RACES:

EM1	Mounted Elves — High Elves in Chainmail, Mounted on Charging Horses	\$ 9.00
EM2	Mounted Elves in Woodland Garb	\$ 9.00
E1	High elves in Chainmail with Spears	\$ 3.50
CH1	Chrysaetian Bolt Thrower in the Shape of a Horned Demon, with Two Man Crew	\$ 5.00
CH2	Chrysaetian Titans of the Imperial Guard	\$ 3.50
CH3	Chrysaetian Super Heroes & Heroine	\$ 4.00
V1	Vulturian Body Cart Drawn by Caped Vulturians	\$ 5.00
WE1	War Elephant — African Bull Elephant, Howdah with Battlements and Towers and Seven Man Harradrin Crew	\$15.00
T1	Trolls with Hammers	\$ 3.00
T2	Armoured Trolls	\$ 3.00
B1	Wild Boar-Headed Tribesmen with Spears	\$ 4.00
B2	Wild Boar-Headed Tribesmen with Clubs	\$ 4.00
BC1	Command Group with Chieftain, Shaman and Standard Bearer	\$ 4.00
AW1	Arctic Warrior — War Sled Drawn By Polar Bears, Driven by Champion	\$ 8.00
C1	Centaur (Standing)	\$ 3.50
C2	Centaur (Galloping)	\$ 3.50
C3	Centaur Mercenaries Charging in Armour	\$ 3.50



GI-8



MB-5

GIANTS:

GI-1	Ent (Wood Giant)	\$ 6.00
GI-2	Frost Giants	\$ 5.00
GI-3	Polyphemos Cyclops, One-Eyed Giant.....	\$ 4.50
GI-4	Cumulus, the Storm Giant, Casting Lightning Bolts	\$18.00
GI-5	Horned Hill Giant with Tree Trunk and Sack...	\$ 6.00
GI-6	"Big Meg" and Her Stew Pot. Female Giant...	\$ 7.50
GI-7	"Old Horny", a Horned Cave Giant with a Wooden Club	\$ 4.00
GI-8	Hrungnir The Giant Carrying His Loot.....	\$15.00
GI-9	Giant crocodile man.....	\$ 4.00

DEMONS:

DE1	Elephant-Headed Demons	\$2.00
DE2	Boar-Headed Demons	\$2.00
DE3	Wind Djinn	\$4.00
DE4	Demon of Terror, Gothmaug, Lord Balrog	\$6.00
DE5	Winged Snake Demon	\$5.00
DE6	Demon of Hell, "Old Scratch"	\$5.00
DE7	Demon Bird-Bear Armed with Axe.....	\$3.00
DE8	Beelzebub, A Lesser Devil	\$3.00
DE9	Medusa Female Snake Haired Demon.....	\$3.00
DE10	Syn The She-Devil	\$5.00
DE11	Demon Rising from Hell's Well.....	\$4.00



GD-1



D-79 and P-39

DRAGONS:

D76	Dragon	\$ 8.00
D78	Dragon — Serpentine Winged Firedrake	\$ 8.00
D79	Dragon — Large Dragon	\$12.00
D80	Dragon — Small Dragon	\$ 8.00
D81	Christmas Dragon	\$25.00

GODS AND DEMIGODS

GD1	Horus The Eagle Head God	\$4.50
GD2	Assur The Assyrian Winged Bull God	\$8.00

MARVELOUS BEASTIES:

MB1	Dragon with Dragon Rider	\$ 6.00
MB2	Triceratops with Rider	\$ 6.00
MB3	Five Headed Hydra	\$ 5.00
MB4	Unicorns — Unicorn Herd	\$ 6.00
MB5	Great Eagle in Flight with Rider	\$10.00
MB6	Griffon with Nest, Eggs, Griffon Chick	\$ 7.00
MB7	Seawitch (Mermaid)	\$ 3.00
MB8	The Sphynx - A Mysterious Riddle	\$ 4.00
MB9	The Great Owl with Armed Rider	\$10.00
MB10	Giant winged cat	\$ 7.50



MB-6